

Instructions for:  
Lake Sacajawea Walk  
Longview, WA, 6/10km, Rated 1A

**Walk Start Location:** Merk Building, 1339 Commerce Ave, Longview, WA.  
GPS Coords: 46.1394, -122.9333.

**Driving Directions:** Northbound on I-5 take exit 36B-A toward WA-432 W/Talley Way/Kelso Drive. Keep left on WA-432 and merge onto Lewis and Clark Trail Hwy. Take 7<sup>th</sup> Ave toward Expo Center, then left onto Hudson St. Right onto Commerce Ave and find the Merk on your left. Southbound on I-5 take exit 40 toward WA-4 S/Long Beach/Kelso-Longview. Right onto N. Kelso Ave, which becomes N. Pacific Ave, then right onto Cowlitz Way/WA-4. Stay straight to go onto Washington Way and left after a half mile onto Commerce Ave to the Merk on your right.

**Park** on street near the Merk on Commerce Ave or the lot behind the building.

**Restrooms** available in the Merk and Lake Sacajawea Park.

**Walk Completion and Credit:** Be sure to log back into the OSB system to finish/complete your online registration after doing the event. The OSB system does not deduct any event fee from a participant's Event Bank until they have submitted event completion info including the event was walked, the distance walked, and the selection of applicable special programs that person is participating in. (Nevertheless, a fee of \$2 for a downloaded PDF is deducted from the user's Event Bank when the PDF is downloaded. Later, any PDF fees are credited back to a user's Event Bank when he/she submits the event completion info as a paying for credit participant. Note, however, the \$2 coupon for the downloaded PDF will expire in 60 days.)

"Please use either the Online Start Box (OSB) or Physical Start Box (PSB) to register and complete the event. Do NOT mix and match, for example, by registering using the OSB then completing your event using the PSB nor signing the PSB log sheet. The sponsoring club only receives credit for an OSB participation when an OSB registration has been completed online by entering your participation date, distances, and any special programs using the OSB."

**Lake Sacajawea** is a man-made lake fed by the Cowlitz River in honor of the Shoshone woman who accompanied Meriwether Lewis and William Clark on their famous expedition to the Pacific Ocean. The park is a living arboretum with nearly 120 species of trees for your enjoyment. For more details check this site: <https://www.mylongview.com/Facilities/Facility/Details/Lake-Sacajawea-12>

These walking directions and maps may only be used in conjunction with a signed American Volkssport Association athletic waiver. All other uses are prohibited. For emergencies contact 911. Walk owner is Karen or Gary Hinderman and they can be reached at 360-441-3391.



**Longview Lake Sacajawea**  
Sponsored by Vancouver USA Volkssporters  
10K Rated 1A, Stamp #Y1316



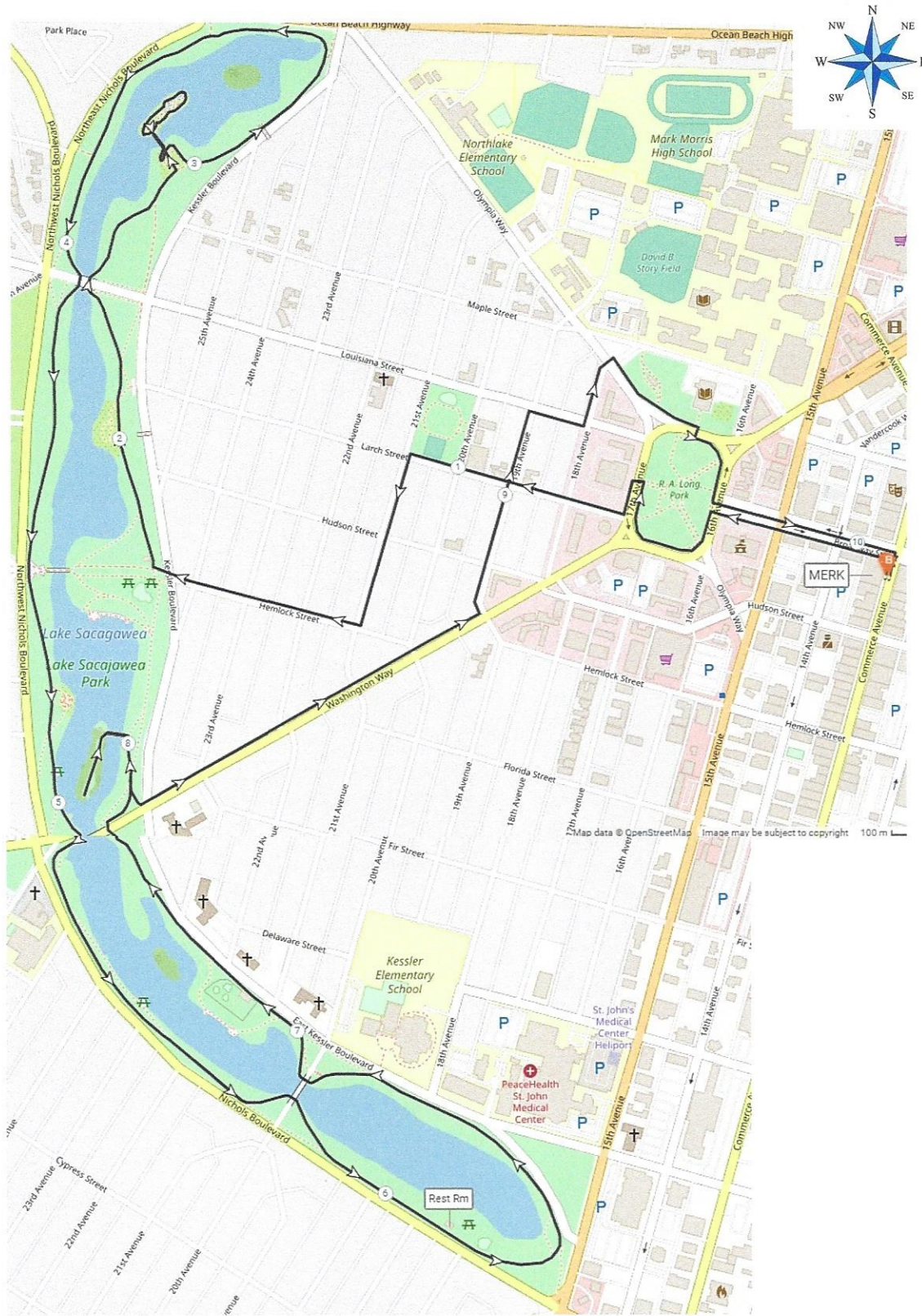
Park on city streets near the Merk building at 1339 Commerce Ave, Longview, WA.

1. From Merk **LEFT** on Commerce Ave to Broadway
2. **LEFT** on Broadway to 16<sup>th</sup> Ave.
3. **CROSS** and **LEFT** on 16<sup>th</sup> Ave to Larch St.
4. **RIGHT** on Larch St around the square (**US Post Office – NRHP**). Continue around square to the crosswalk in front of the Monticello Hotel.
5. **CROSS** and **LEFT** on 17<sup>th</sup> Ave to Larch St.
6. **RIGHT** on Larch St to 21<sup>st</sup> Ave.
7. **LEFT** on 21<sup>st</sup> Ave to Hemlock St.
8. **RIGHT** on Hemlock St & continue to the lake. (**Main entrance to the lake and barthrooms**)
9. **RIGHT** on the lake path (**Rock path to the left is a Rhododendron Garden**)
10. **CONTINUE** on the lake path under the bridge @ Louisiana St.
11. **LEFT** into the Japanese gardens (**NO DOGS ALLOWED**) (3K)
12. **CROSS** the foot bridge and circle the island returning to the bridge.
13. **CROSS** the foot bridge and continue **LEFT** around the lake going under the bridges.
14. Pass under the 20<sup>th</sup> Ave Bridge. (**Bathroom on the SW end of the lake**)
15. **CONTINUE** around the south end of the lake.
16. Pass under the 20<sup>th</sup> Ave bridge (7K)
17. **CONTINUE** to the light @ Washington Way (**Community Church @ Kessler & Washington Way NHRP**)
18. **CONTINUE** on the Lake Path to Lion's Island. (8K)
19. **LEFT** on to Lion's Island and walk the perimeter past the Totem Pole.
20. **RIGHT** off Lion's Island and **RETURN** to Washington Way
21. **LEFT** on Washington Way to 19<sup>th</sup> Ave.
22. **LEFT** on 19<sup>th</sup> Ave to Louisiana St.
23. **RIGHT** on Louisiana St to 18<sup>th</sup> Ave.
24. **LEFT** on 18<sup>th</sup> Ave to Olympia Way.
25. **CROSS** and **RIGHT** on Olympia Way. (**Note the Squirrel Bridge on the left**)
26. **CONTINUE** as it curves to the left to the front of the Library and the crosswalk.
27. **RIGHT** to cross Olympia Way and enter R.A. Long Square. Keep **LEFT** on the path continuing around the square to Broadway.
28. **LEFT** on Broadway in crosswalk to Commerce St.
29. **RIGHT** on Commerce St and return to the start point at the Merk.

Be sure to thank our walkbox hosts at the Red Lion Hotel if you used the physical start box.

We hope you've enjoyed this walk and will join us on our other routes in Southwest WA from Gorge to Coast. Visit us at [www.VUSAV.club](http://www.VUSAV.club).

# Longview Lake Sacajawea 10Km Walk



These walking directions and maps may only be used in conjunction with a signed American Volkssport Association athletic waiver. All other uses are prohibited. For emergencies contact 911. Walk owner is Karen or Gary Hinderman and they can be reached at 360-441-3391.



**Longview Lake Sacajawea**  
Sponsored by Vancouver USA Volkssporters  
6K Rated 1A, Stamp #Y1316



Park on city streets near the Merk building at 1339 Commerce Ave, Longview, WA.

1. From Merk **LEFT** on Commerce Ave to Broadway
2. **LEFT** on Broadway to 16<sup>th</sup> Ave.
3. **CROSS** and **LEFT** on 16<sup>th</sup> Ave to Larch St.
4. **RIGHT** on Larch St around the square (Larch turns into 17<sup>th</sup> Ave). Continue around square to the crosswalk in front of the Monticello Hotel.
5. **CROSS** and **LEFT** on 17<sup>th</sup> Ave to Larch St.
6. **RIGHT** on Larch St to 21<sup>st</sup> Ave.
7. **LEFT** on 21<sup>st</sup> Ave to Hemlock St.
8. **RIGHT** on Hemlock St to Kessler Blvd.
9. **CROSS** Kessler Blvd in crosswalk toward the lake.
10. **RIGHT** on the lake path, continuing under the Louisiana St bridge to the Japanese Gardens.
11. **LEFT** into the gardens (**NO DOGS ALLOWED**)
12. **CROSS** the foot bridge and circle the island returning to the bridge.
13. **CROSS** the foot bridge and continue **LEFT** around the lake until you get to Louisiana St (bridge).
14. **LEFT** on Louisiana St to 18<sup>th</sup> Ave.
15. **LEFT** on 18<sup>th</sup> Ave to Olympia Way.
16. **CROSS** and **RIGHT** on Olympia Way as it curves to the left to the front of the Library and the crosswalk.

17. **RIGHT** to **CROSS** Olympia Way and enter RA Long Square. Keep **LEFT** on the path continuing around the square to Broadway.

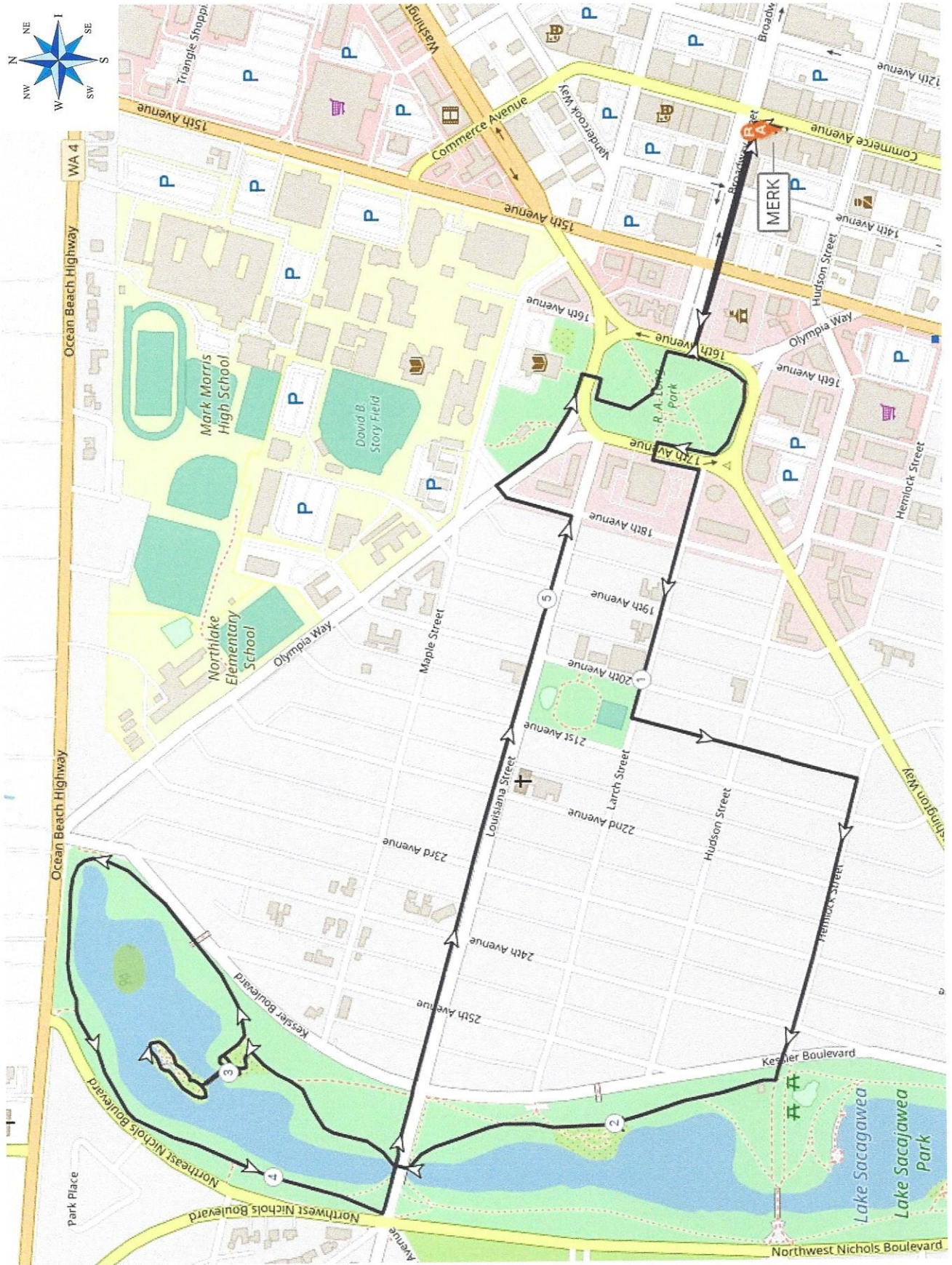
18. **LEFT** on Broadway in crosswalk to Commerce St.

19. **RIGHT** on Commerce St and return to the start point at the Merk.

Be sure to thank our walkbox hosts at the Red Lion Hotel if you used the physical start box.

We hope you've enjoyed this walk and will join us on our other routes in Southwest WA from Gorge to Coast. Visit us at [www.VUSAV.club](http://www.VUSAV.club).

# Longview Lake Sacajawea 6Km Walk



## Overview

Rain or shine finds the health-conscious walking, jogging and biking the 3.5 miles of trails that wind under landscaped bridges past many species of trees and flowers in bloom, through rhododendron gardens and past the lake's two spectacular fountains.

There truly is something for everyone at the lake, so add this gem to your list of things to do in Longview, and come down for a visit. You will see why we call Lake Sacajawea the city's crown jewel: it always sparkles with activity!

## Flora

A more leisurely stroll will allow you to learn about the planets or trees by way of the Solar System Walk or the Frank Willis Arboretum, or enjoy the captivating Japanese Gardens, splendid in any season.

## Activities

Kayaking, fishing, canoeing and picnicking bring out families for a day of fun.

Children or those young at heart can enjoy two unique playgrounds, while everyone loves relaxing to Concerts at the Lake on summer evenings and taking in the Go-4th event celebrating the Fourth of July holiday.

During the week people come to the park to relax during lunch time, bringing a book or just visiting and watching the activity of children feeding birds, squirrels, and chipmunks.

## Lake Water Sources & Levels

The water source for Lake Sacajawea is from the Cowlitz River. The water is pumped from the River to an open ditch that flows into the north end of the lake. It flows to the south end where the overflow exits into the diking system and ultimately into the Columbia River. Lake levels rise during the rainy season, but are controlled as an integral part of the flood control program for the city. The paths which rivers flow change over time and Lake Sacajawea is a remnant of one of those course changes.

## Lake Wildlife

### Fish/Fishing

The State Department of Fisheries Wildlife classifies the lake as a "warm waters fishery" with year round fishing. Fish populations include large mouth bass, trout (stocked several times per year), a healthy population of Bluegill, some Yellow perch. An annual Fishing Derby is held for the children of the community. Aquatic weeds became a problem in the 1970s and 1980s so in 1995 sterile grass-eating carp were introduced to eliminate the unwanted weeds.

### Mammals

Citizens enjoy monitoring the activities of:

- Otters
- Weasels
- Opossums
- Beavers
- Raccoons
- Deer

## **Birds**

Water fowl are numerous, some indigenous year round. They include a variety of ducks, Canadian geese, Cormorants in the spring, colorful wood ducks for which volunteers provide nesting boxes, and many more. Domesticated geese and ducks are frequently deposited at the lake and their populations are controlled by relocation.

## **Frank Willis Arboretum**

The diversity and number of trees in Lake Sacajawea Park elicited an interest in identifying the different trees. In 1987 the Lower Columbia Council of Camp Fire girls proposed and completed the project of labeling trees around the lake with aluminum tags listing the common names. In 1995 the Superintendent expanded on the concept to include scientific names, common names, country of origin and mapping to locate the trees as an informational and educational tool for the community.

With that information, the labeled trees were incorporated into an arboretum setting and named after a former Superintendent of Parks, who was instrumental in elevating the awareness of trees in the mid 1950s and achieved success with a Master Street Tree Plan in 1963. The arboretum, dedicated in 2002, has 119 species of trees represented in a walking tour of approximately 3.5 miles around the periphery of the lake.

## **Lake Sacajawea History**

Development of Lake Sacajawea and the park began in 1924 and was maintained for a number of years as a park.

### **The Great Depression**

The Great Depression of the 1930s created problems and back taxes had accrued. One solution for the back taxes was a proposed development of the lake property into 346 residential lots to sell. Public outcry and opposition ensued. The community wanted to keep the property as a park. The City could not afford to purchase and assume ownership of the privately owned property, but some legal maneuvering and legislation corrected the problem and the Longview Company deeded the lake property to the city in 1938.

### **World War II**

Shortly thereafter, World War II erupted and the lake fell into disrepair and little was spent on maintenance and upkeep including watering of the landscape. In 1948 and 1949 the lake was chemically treated to kill the indigenous carp and then in 1950 the first stocking of the lake began when 40,000 trout were introduced.

### **Post War**

In 1952, after twenty years of not watering the landscaping, the Council funded new farm irrigation equipment and water was once again being used. Stagnation, algal growth, water clarity, and low oxygen content became a problem and in 1953 and 1954 pumping water from the Cowlitz River began.

**“Our Mission** is to ensure that the citizens of Longview experience the benefits of leisure pursuits through responsive programming, dedicated leadership, quality parks and facilities, and collaboration with other organizations all for the purpose of enriching lives and developing skills while appreciating our diversities.”

**For your enjoyment...** The Arboretum exists for enjoyment and education. Since the plant collection, pathways and lake are especially vulnerable to damage, please help us protect this fragile and valuable resource.

- **Jogging and Bicycles:** Jog and bike only on trails to help preserve the grassy areas.
- **Pets:** Please obey leash and scoop laws.
- **Wildlife:** Please DO NOT FEED THE WATERFOWL, as human food can be harmful to birds.

**THANK YOU!**



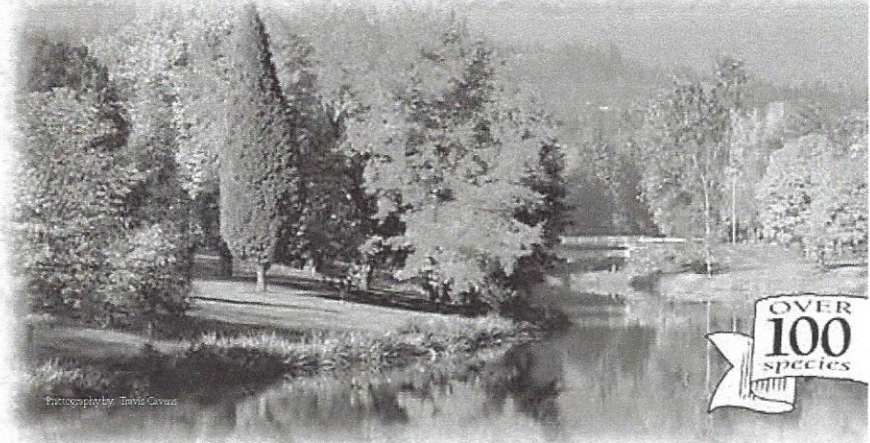
## How to get to the Arboretum.

From Interstate 5, take exit 36 to Tennant Way. Travel to the 5th stop light (intersection of Tennant/Nichols and Oregon Way/15th) and you will see the beginning of Lake Sacajawea Park on your right. Continue on two more stop lights. Turn right at the second stop light (Washington Way), cross the lake bridge and turn left at Kessler Blvd. Continue on Kessler to the brick plaza on the left, where the walking tour begins.

# Lake Sacajawea

Frank Willis

## ARBORETUM



Photography by Travis Gilman

City of Longview, Parks Division  
2920 Douglas Street, Longview, WA 98632  
Parks & Recreation Department: 360-577-3345  
Parks Maintenance Division: 360-577-3341



Arboretum brochure and development made possible by a grant from the Washington State Department of Natural Resources and the U.S. Forest Service

**GUIDE & MAP**  
to the trees in  
your community.



**The “Arboretum.”** As defined, an arboretum is a botanical garden of trees, or a place where trees and shrubs are available for scientific and educational purposes. The map and guide on the inside of this brochure will walk you through Longview’s Willis Arboretum along the shores of beautiful Lake Sacajawea.

**A rich history.** Lake Sacajawea and the surrounding park were developed from an oxbow of the Cowlitz River in 1926, which was then called “Fowler’s Slough.” The original tree plantings in 1926 provided an excellent base for developing a walking arboretum.

Today, the 60-acre lake and 60-acre park surrounding the lake provides a natural backdrop for educational and recreational activities for the community, including 3.5 miles of hiking and biking trails.

Careful observations at the lake will reveal a variety of trees, urban wildlife, and shrubbery. Lake Sacajawea is designated as a “Warm Water Fishery” by Washington State Fish and Wildlife. This agency monitors the fish population and periodically stocks the lake with hatchery trout.

## What is “urban and community forestry?”

Do you live in a forest? Chances are, you are among the 80% of all Americans who currently live in some of the most valuable forests in existence,

the urban and community forests.

Urban and community forests are dynamic ecosystems that occur when trees, shrubs, grass, wildlife and streams interact with a populated environment.

The trees in your yard, along your street, beside rivers and streams, in parks and green spaces, and near the buildings where you work all help to make up the urban forest.

The management of these trees and related vegetation in neighborhoods, communities, and cities is called Urban and Community Forestry.

## Benefits of a healthy urban forest.

Properly managed urban forests create more livable cities and communities by:

- Enhancing tourism by adding beauty and softening the harsh lines of urban environments.
- Providing habitat for many species of birds, fish, and mammals – large and small.
- Aiding in salmon recovery by shading and cooling streams and filtering contamination.

- Reducing storm water run-off and erosion management costs by way of intercepting, storing, and using rainfall.
- Saving energy costs through reduced cooling and heating needs.
- Increasing economic stability by way of attracting businesses and customers to communities.

## Longview’s own urban forestry program

is an award-winning source of community pride and enrichment

- Four certified Arborists on staff, certified with the International Society of Arboriculture.
- 12,000 + inventoried street and park trees on computer database.
- Tree City USA for 16 years (second city in the state of Washington to be awarded the title).
- Tree City USA Growth Award recipient.

Longview’s priorities in its forestry program are:

- Damage control and tree emergencies.
- Public safety and tree hazard abatement.
- Ongoing renewing and restoring of the City’s inventory of trees



# FRANK WILLIS ARBORETUM SPECIES LIST

NO.	COMMON NAME	TAXONOMIC NAME
1.	Douglas Fir	<i>Pseudotsuga menziesii</i>
2.	Deodora Cedar	<i>Cedrus deodora</i>
3.	Shore Pine, Lodgepole Pine	<i>Pinus contorta</i>
4.	Alaskan Yellow Cedar	<i>Chamaecyparis nootkatensis</i>
5.	Sitka Spruce	<i>Picea sitchensis</i>
6.	Bosnian Pine	<i>Pinus heldreichii leucodermis</i>
7.	Colorado Blue Spruce	<i>Picea pungens</i>
8.	Giant Sequoia	<i>Sequoiadendron giganteum</i>
9.	Black Pine	<i>Pinus thumbergii</i>
10.	Spanish Fir	<i>Abies pinsapo</i>
11.	Ponderosa Pine	<i>Pinus ponderosa</i>
12.	Goldenrain Tree	<i>Koeleruteria paniculata</i>
13.	Bradford Pear	<i>Pyrus calleryana 'Bradford'</i>
14.	Red Horse Chestnut	<i>Asculus x carnea 'Ft. McNair'</i>
15.	Cleveland Select Pear	<i>Pyrus calleryana 'Cleveland Select'</i>
16.	Dawn Redwood	<i>Metasequoia gypstroboides</i>
17.	European Hornbeam	<i>Carpinus betulus 'fastigiata'</i>
18.	Coast Redwood	<i>Sequoia sempervirens</i>
19.	Western White Pine	<i>Pinus monticola</i>
20.	Red Oak	<i>Quercus rubra</i>
21.	Southern Magnolia	<i>Magnolia grandiflora</i>
22.	Red Alder	<i>Alnus oregona</i>
23.	Eastern White Pine	<i>Pinus strobus</i>
24.	Raywood Ash	<i>Fraxinus oxycarpa 'Raywood'</i>
25.	Horse Chestnut	<i>Aesculus hippocastanum</i>
26.	Scarlet Oak	<i>Quercus coccinea</i>
27.	Black Cottonwood	<i>Populus trichocarpa</i>
28.	Blue Atlas Cedar	<i>Cedrus atlantica</i>
29.	Mugho pine	<i>Pinus mugo</i>
30.	Oregon Ash	<i>Fraxinus latifolia</i>
31.	European Larch	<i>Larix decidua</i>
32.	Bald Cypress	<i>Taxodium distichum</i>
33.	Monkey Puzzle	<i>Araucaria araucana</i>
34.	Katsura	<i>Cercidiphyllum japonicum</i>
35.	Hinoki Cypress	<i>Chamaecyparis obtuse</i>
36.	Japanese Red Pine	<i>Pinus densiflora</i>
37.	Peach-leaf Willow	<i>Salix amygdaloides</i>
38.	Honey Locust	<i>Gleditsia triacanthos</i>
39.	Japanese Maple	<i>Acer palmatum 'Red lace-leaf'</i>
40.	Elderberry	<i>Sambucus neomexicana</i>
41.	River Bird	<i>Betula nigra</i>
42.	London Plane	<i>Platanus acerifolia</i>
43.	Korean Fir	<i>Abies koreana</i>
44.	Red Maple	<i>Acer rubrum</i>
45.	Austrian Pine	<i>Pinus nigra</i>
46.	Western Red Cedar	<i>Thuja plicata</i>
47.	Hawthorn	<i>Crataegus laevigata</i>
48.	Sweetgum	<i>Liquidambar styraciflua</i>
49.	Mountain Ash	<i>Sorbus aucuparia</i>
50.	Lombardy Poplar	<i>Populus nigra italica</i>
51.	White Basswood	<i>Tilia heterophylla</i>
52.	Mossy-cup Oak	<i>Quercus macrocarpa</i>
53.	Arizona Ash	<i>Fraxinus velutina</i>
54.	Umbrella Pine	<i>Sciadopitys verticillata</i>
55.	Zelkova	<i>Zelkova serrata 'Green Vase'</i>
56.	Filbert (Hazelnut)	<i>Corylus maxima</i>
57.	Chinese Elm	<i>Ulmus parvifolia 'Aliee'</i>
58.	White Ash	<i>Fraxinus americana 'A.Purple'</i>
59.	Photinia	<i>Photinia fraseri</i>
60.	European Beech	<i>Fagus sylvatica</i>
61.	Washington Hawthorn	<i>Crataegus phaenopyrum</i>
62.	Purple-lobed Locust	<i>Robinia pseudoacacia</i>
63.	Norway Spruce	<i>Picea abies</i>
64.	Bolleana Poplar	<i>Populus alba 'Pyramidalis'</i>
65.	Japanese White Pine	<i>Pinus parviflora 'Glauca'</i>
66.	Armstrong Red Maple	<i>Acer rubrum 'Armstrong'</i>
67.	Incense Cedar	<i>Calocedrus decurrens</i>
68.	Madrona	<i>Arbutus menziesii</i>
69.	Ginkgo (Maidenhair Tree)	<i>Ginkgo biloba</i>
70.	Mt. Fuji Cherry	<i>Prunus serrulata 'Mt. Fuji'</i>
71.	Nuttal willow	<i>Salix scouleriana</i>
72.	Redbud	<i>Cercis canadensis 'Forest Pansy'</i>
73.	Empress Tree	<i>Paulownia tomentosa</i>
74.	Western Hemlock	<i>Tsuga heterophylla</i>
75.	Port Orford Cedar	<i>Chamaecyparis lawsoniana</i>
76.	English Holly	<i>Ilex aquifolium</i>
77.	Laurel Oak	<i>Quercus laurifolia</i>
78.	Basswood	<i>Tilia americana</i>
79.	White Birch	<i>Betula pendula</i>
80.	False Cypress	<i>Chamaecyparis pisifera</i>
81.	Amur Maple	<i>Acer ginnala 'Flame'</i>
82.	Weeping Willow	<i>Salix babylonica</i>
83.	White Oak	<i>Quercus garryana</i>
84.	Catalpa	<i>Catalpa bignonioides</i>
85.	Emerald Queen Maple	<i>Acer platanoides 'Emerald Queen'</i>
86.	Pacific Dogwood	<i>Cornus nuttallii</i>
87.	Black Walnut	<i>Juglans nigra</i>
88.	English Elm	<i>Ulmus campestris</i>
89.	Tulip Tree	<i>Liriodendron tulipifera</i>
90.	Korean Dogwood	<i>Cornus kousa 'Chinensis'</i>
91.	Green Ash	<i>Fraxinus pennsylvanica 'Sherwood Glen'</i>
92.	Thundercloud Plum	<i>Prunus cerasifera</i>
93.	Flowering Ash	<i>Fraxinus ornus</i>
94.	Golden Chain Tree	<i>Laburnum anagyroides</i>
95.	Sweet Cherry	<i>Prunus avium</i>
96.	White Fir	<i>Abies concolor</i>
97.	Kwansan Cherry	<i>Prunus serrulata cv. 'Kwanzan'</i>
98.	Schwedler Maple	<i>Acer platanoides 'Schwedleri'</i>
99.	Pin Oak	<i>Quercus palustris</i>
100.	Plum Tree (Prune)	<i>Prunus domestica</i>
101.	Pink Dawn Chitalpa	<i>Chitalpa tashkentensis 'Pendula'</i>
102.	Sycamore Maple	<i>Acer pseudoplatanus</i>
103.	Scotch Pine	<i>Pinus sylvestris</i>
104.	Fir	<i>Abies lasiocarpa</i>
105.	Crabapple	<i>Malus angustifolia</i>
106.	Sumac	<i>Rhus glabra</i>
107.	Pink Dogwood	<i>Cornus florida</i>
108.	Western Yew	<i>Taxus brevifolia</i>
109.	Irish Yew	<i>Taxus baccata 'Stricta'</i>
110.	Western Black Hawthorn	<i>Crataegus douglasii</i>
111.	Liberty Elm	<i>Ulmus americana 'Liberty'</i>
112.	Hackberry	<i>Celtis occidentalis</i>
113.	Sugar Maple	<i>Acer saccharum</i>
114.	Vine Maple	<i>Acer circinatum</i>
115.	Quaking Aspen	<i>Populus tremuloides 'Erecta'</i>
116.	Purple-leaf Beech	<i>Fagus sylvatica 'Atropunicea'</i>
117.	American Elm	<i>Ulmus americana</i>
118.	Autumn cherry	<i>Prunus serrulata 'Shirofugen'</i>
119.	Yoshino cherry	<i>Prunus yedoensis</i>

# Lake Sacajawea

## Frank Willis ARBORETUM

### Frank Willis



realized a dream when he left Oklahoma in 1948, with his family. He was in search of the planned city he had visited as a child in 1930, and never forgot. His vision as Longview's Parks and Recreation Director was to beautify the city and have a park in every neighborhood.

Frank retired after 30 years of service and left a legacy of 14 parks and more than 8,000 elm, maple, cherry, plum, birch and other trees for citizens to enjoy.

