

ST. LOUIS, MO 5K CENTRAL WEST END YRE 1337 WALK DIRECTIONS (OSB)

COPYRIGHT © 2020 – South Central Region, AVA: America's Walking Club

This map and directions may only be used in conjunction with a signed American Volkssport Association (AVA) athletic waiver. All other uses are prohibited. In case of emergency: Dial 911

Driving directions to start point in Forest Park at the Dennis & Judith Jones Visitor & Education Center, 5595 Grand Drive, St. Louis, MO 63112: From I-64 Exit 36A go North on Kingshighway Blvd. approx. 0.9 mile to Lindell Blvd. LEFT on Lindell approx. 1.1 mile to DeBaliviere Blvd. LEFT on DeBaliviere, passing Missouri History Museum. Bear RIGHT behind the museum, then LEFT on Grand Drive to Visitor Center parking lot on your left (GPS 38.644047,-90.283439). Rest rooms at Visitor Center and on the trail.

NOTE: Please use EITHER the Online Start Box (OSB) OR the Physical Start Box (PSB) to register and complete this event. Do NOT mix and match, for example, by registering using the OSB then completing your event using the PSB and/or signing the PSB log sheet. The sponsoring club only receives credit for an OSB participation when an OSB registration has been completed online by entering your participation date, distances, and any special programs using the OSB.

OSB COMPLETION AND CREDIT: Be sure to log back into the OSB system to "finish/complete" your online registration after doing the event. The OSB system does not deduct any event fee from a participant's Event Bank until they have submitted event completion info including the date of the event, the distance, and the selection of applicable special programs that person is participating in. (Nevertheless, a fee of \$2 for a downloaded PDF is deducted from the user's Event Bank when the PDF is downloaded. Later, any PDF fees are credited back to a user's Event Bank when he/she submits the event completion info as a paying for credit participant. Note, however, the \$2 coupon for the downloaded PDF will expire in 60 days.)

Special Programs: Rockin' Around the Clock (Forest Park Visitor Ctr.); Walk Like an Olympian (St. Louis – 1904 Olympics); Walking the USA A to Z ("S"); Walking Missouri Counties (*St. Louis City*)

Legend: TR = Turn Right, TL = Turn Left, SA = Straight Ahead, CR = Cross, SP = Special Program Qualifier

1. Exit the Visitor Center (SP) through the REAR (North Side) doors. Veer diagonally left on the paved walking path a short distance to the corner of DeBaliviere Circle and Lindell Blvd. (the Missouri History Museum will be on your left).
2. CR Lindell Blvd and continue SA on the right side of DeBaliviere Ave. for 2 blocks to Pershing Ave
3. TR on Pershing Ave. for 2 blocks to Union Blvd.
4. CR Union Blvd., then TL on Union Blvd. for one block to Waterman Blvd.
5. TR on Waterman Blvd. for 3 blocks to Kingshighway Blvd.
6. CR & TR on Kingshighway for one block to Pershing Place.
7. TL on Pershing Place for one block to Euclid Ave.
8. TR on Euclid Ave. for 2 blocks to Maryland Plaza. When you reach Maryland Plaza, look to your left for the World Chess Hall of Fame at 4652 Maryland Ave. (Look for the huge chess piece in front.)
9. Continue SA on Euclid one more block to Lindell Blvd. At the NW corner of Euclid and Lindell is the St. Louis Public Library Schlafly Branch (restrooms).
10. TR on Lindell Blvd. passing the historic Chase Park Plaza Hotel on the corner of Lindell & Kingshighway.
11. Continue SA on the right side of Lindell Blvd. for 3 long blocks to DeBaliviere Ave.
12. TL & CR Lindell Blvd. (History Museum on your right), then veer diagonally left on the paved walking path back to the Start/Finish at the Visitor Center.

Please refer any questions or comments on this walk to the walk POCs – DeAnne & Gordon Brown.

(D) deeebee333@gmail.com

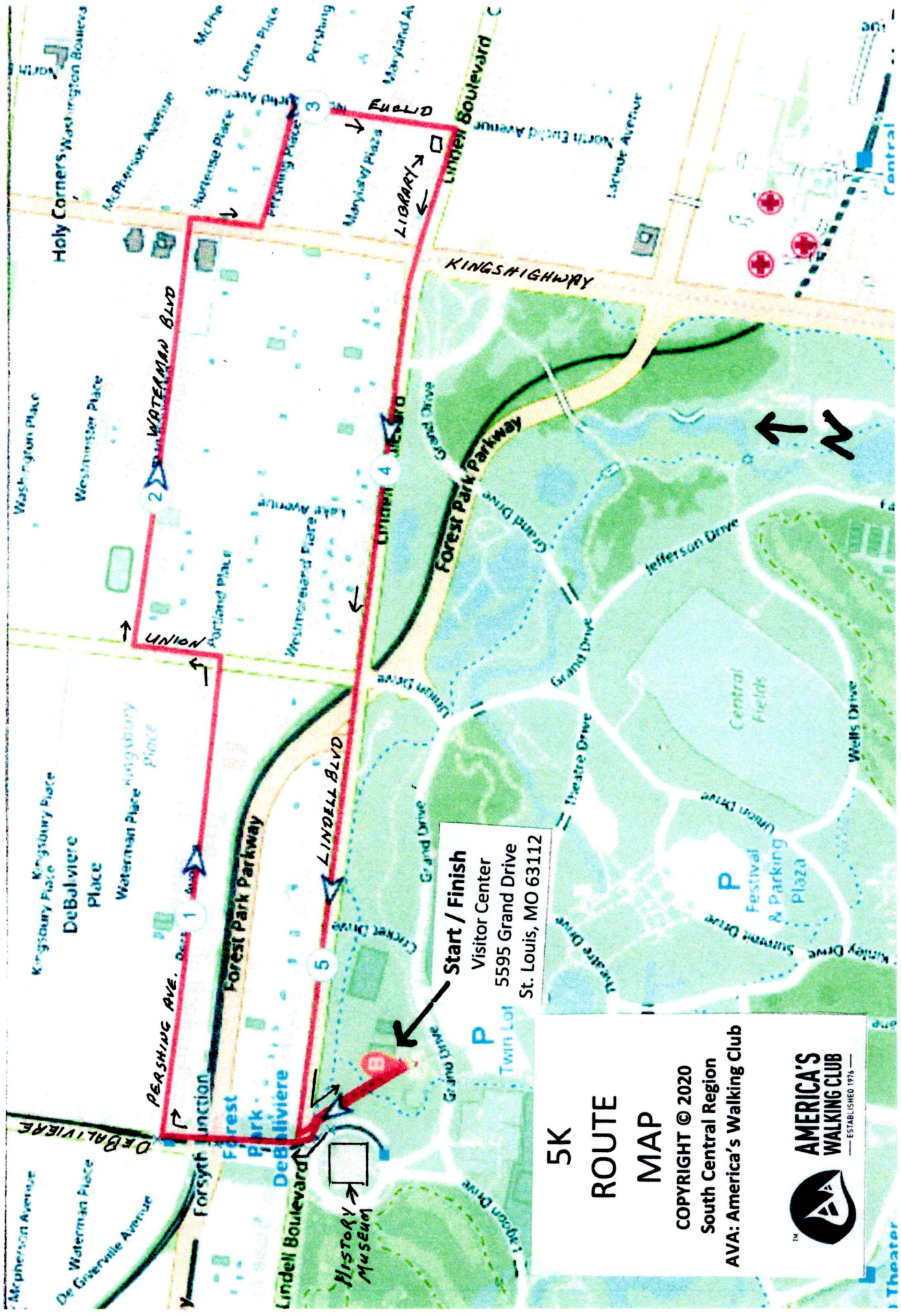
(G) brownstl@swbell.net

Phone: 314-878-8647

The St. Louis Stuttgart Volksmarch Club hopes you have enjoyed our St. Louis Central West End Volksmarch. Please visit our web-site <https://www.saintlouiswalkers.com/> for information on other walks in the St. Louis Metro area.



**AMERICA'S
WALKING CLUB**
— ESTABLISHED 1976 —



Start / Finish
 Visitor Center
 5595 Grand Drive
 St. Louis, MO 63112

**5K
 ROUTE
 MAP**

COPYRIGHT © 2020
 South Central Region
 AVA: America's Walking Club



ST. LOUIS, MO 10K CENTRAL WEST END YRE 1337 WALK DIRECTIONS (OSB)

COPYRIGHT © 2020 – South Central Region, AVA: America's Walking Club

This map and directions may only be used in conjunction with a signed American Volkssport Association (AVA) athletic waiver. All other uses are prohibited. In case of emergency: Dial 911

Driving directions to start point in Forest Park at the Dennis & Judith Jones Visitor & Education Center, 5595 Grand Drive, St. Louis, MO 63112: From I-64 Exit 36A go North on Kingshighway Blvd. approx. 0.9 mile to Lindell Blvd. LEFT on Lindell approx. 1.1 mile to DeBaliviere Blvd. LEFT on DeBaliviere, passing Missouri History Museum. Bear RIGHT behind the museum, then LEFT on Grand Drive to Visitor Center parking lot on your left (GPS 38.644047,-90.283439). Rest rooms at Visitor Center and on the trail.

NOTE: Please use EITHER the Online Start Box (OSB) OR the Physical Start Box (PSB) to register and complete this event. Do NOT mix and match, for example, by registering using the OSB then completing your event using the PSB and/or signing the PSB log sheet. The sponsoring club only receives credit for an OSB participation when an OSB registration has been completed online by entering your participation date, distances, and any special programs using the OSB.

OSB COMPLETION AND CREDIT: Be sure to log back into the OSB system to "finish/complete" your online registration after doing the event. The OSB system does not deduct any event fee from a participant's Event Bank until they have submitted event completion info including the date of the event, the distance, and the selection of applicable special programs that person is participating in. (Nevertheless, a fee of \$2 for a downloaded PDF is deducted from the user's Event Bank when the PDF is downloaded. Later, any PDF fees are credited back to a user's Event Bank when he/she submits the event completion info as a paying for credit participant. Note, however, the \$2 coupon for the downloaded PDF will expire in 60 days.).

Special Programs: Ice Cream Parlors (Jeni's Splendid Ice Creams); Rockin' Around the Clock (Forest Park Visitor Ctr.); Walk Like an Olympian (St. Louis – 1904 Olympics); Walking the USA A to Z ("S"); Walking Missouri Counties (*St. Louis City*)

Legend: TR = Turn Right, TL = Turn Left, SA = Straight Ahead, CR = Cross, SP = Special Program Qualifier

1. Exit the Visitor Center (SP) through the REAR (North Side) doors. Veer diagonally left on the paved walking path a short distance to the corner of DeBaliviere Circle and Lindell Blvd. (the Missouri History Museum will be on your left).
2. CR Lindell Blvd and continue SA on the right side of DeBaliviere Ave. for 3 blocks to Waterman Blvd. (Note: there is no vehicle access from Waterman to DeBaliviere).
3. TR on Waterman Blvd. for 2 blocks to Belt Ave.
4. TR on Belt Ave. for one block to Pershing Ave.
5. TL on Pershing Ave. for 2 blocks to Union Blvd.
6. CR Union Blvd., then TL on Union Blvd. for one block to Waterman Blvd.
7. TR on Waterman Blvd. for 3 blocks to Kingshighway Blvd.
8. TL on Kingshighway and continue SA to the area known as "Holy Corners", so named because of a group of early 20th century religious buildings. This area was added to the National Register of Historic Places in 1975.
9. You will first pass the **First Church of Christ, Scientist (1904)** at 5000 Westminster Pl. (SW corner of Westminster Pl. and Kingshighway).
10. CR Westminster Pl. and pass the **Tuscan Temple (1908)** at 5015 Westminster Pl. (NW corner of Westminster Pl. and Kingshighway).
11. Next pass the **St. John's Methodist Church (1902)** at 5000 Washington Pl. (SW corner of Washington Pl. and Kingshighway). Across Washington Pl. is **Temple Israel (1908)** at 5001 Washington Pl. (NW corner of Washington Pl. and Kingshighway).

12. When you reach Washington Pl., **TR & CR** Kingshighway, then **TR** on Kingshighway for one block to McPherson Ave. passing the **Second Baptist Church (1907)** at 500 North Kingshighway.
13. **TL** on McPherson Ave. for one block to Euclid Ave.
14. **TR** on Euclid Ave., passing Jeni's Splendid Ice Creams (**SP**) at 389 N. Euclid Ave. When you reach Maryland Plaza, look to your left for the World Chess Hall of Fame at 4652 Maryland Ave. (Look for the huge chess piece in front.)
15. Continue **SA** on Euclid to Lindell Blvd. At the NW corner of Euclid and Lindell is the St. Louis Public Library Schlafly Branch (restrooms).
16. **TL** on Lindell Blvd for one block to Taylor Ave.
17. **TL** on Taylor for 4 blocks to McPherson Ave.
18. **TL** on McPherson Ave. for 2 blocks to Walton Ave. (after crossing Walton Row).
19. **TR** on Walton Ave. for one block to Westminster Pl.
20. **TR** on Westminster Pl. for 2 blocks to Newstead Ave.
21. **TR** on Newstead Ave. for 7 blocks to Forest Park Ave., passing the **Cathedral Basilica of St. Louis** at the corner of Newstead and Lindell Blvd. If the doors are open, look inside. This beautiful cathedral, completed in 1914, has interior mosaics covering 83,000 sq. ft. in more than 7000 colors. The mosaic installation was started in 1912 and not completed until 1988, mostly by the father and son team of Paul and Arno Heuduck, who spent nearly all their working careers on this one installation. It is the largest mosaic collection in the world outside Russia.
22. **TR** on Forest Park Ave. for 2 blocks to Euclid Ave.
23. **TR** on Euclid Ave. for 3 blocks to Lindell Blvd., passing several fine eating establishments.
24. At Lindell Blvd., **TL & CR** Euclid Ave., then **TR & CR** Lindell Blvd.
25. **TL** on Lindell Blvd. (again passing the Schlafly Branch Library), then passing the historic Chase Park Plaza Hotel on the corner of Lindell & Kingshighway.
26. Continue **SA** on the right side of Lindell Blvd for 3 long blocks to DeBaliviere Ave.
27. **TL & CR** Lindell Blvd. (History Museum on your right), then veer diagonally left on the paved walking path back to the Start/Finish at the Visitor Center.

Please refer any questions or comments on this walk to the walk POCs – DeAnne & Gordon Brown.

(D) deeebee333@gmail.com

(G) brownstl@swbell.net

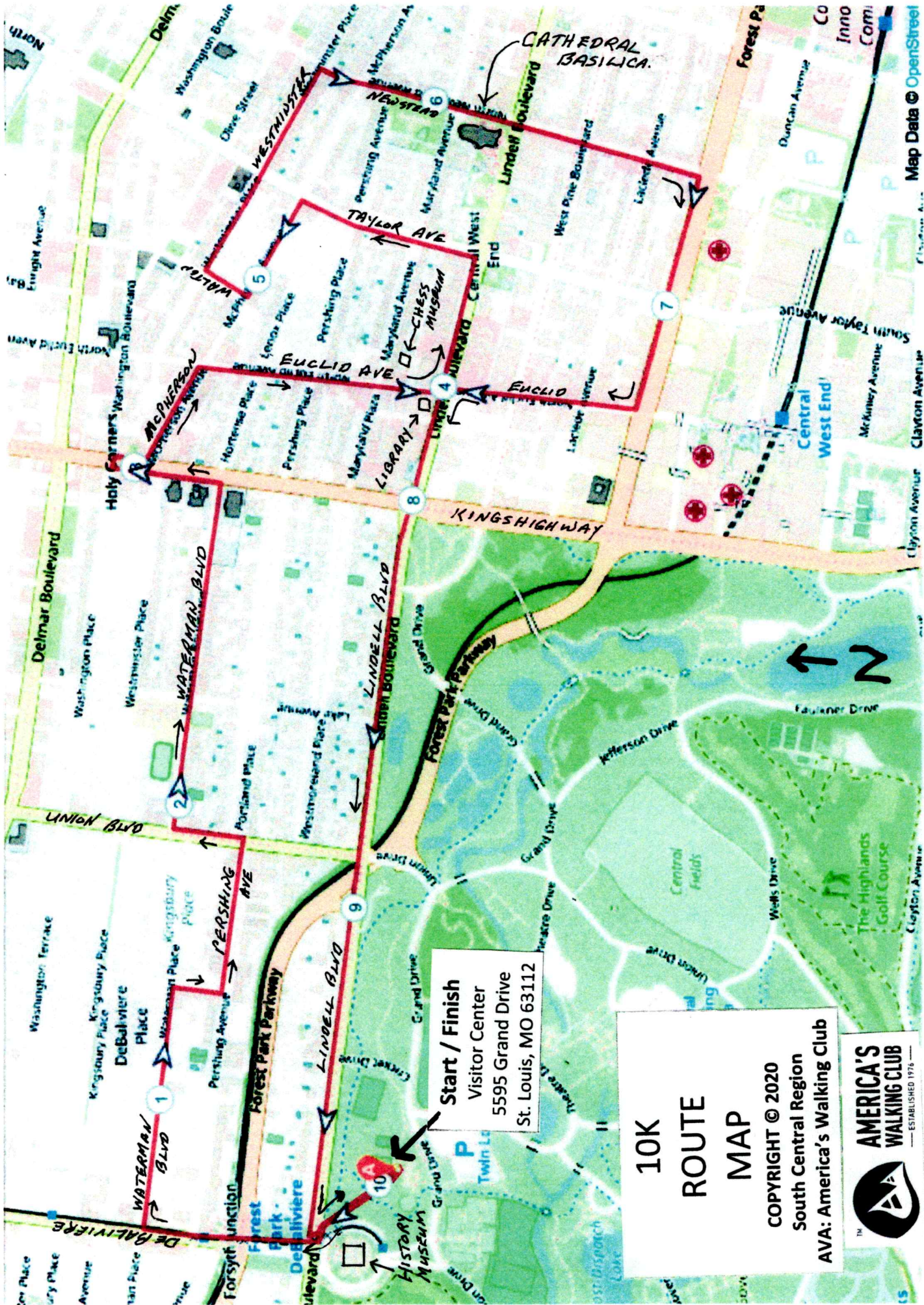
Phone: 314-878-8647

The St. Louis Stuttgart Volksmarch Club hopes you have enjoyed our St. Louis Central West End Volksmarch. Please visit our web-site

<https://www.saintlouiswalkers.com/> for information on other walks in the St. Louis Metro area.



**AMERICA'S
WALKING CLUB**
— ESTABLISHED 1976 —



Start / Finish
 Visitor Center
 5595 Grand Drive
 St. Louis, MO 63112

**10K
 ROUTE
 MAP**

COPYRIGHT © 2020
 South Central Region
 AVA: America's Walking Club

