

# The Olympic Peninsula Explorers Volkssport Club Welcomes You to the Silverdale – Clear Creek Trail Walk

The walk is 5k and 10k. The 5k route (rated 1B) is exclusively on trails. The 10k route (Rated 2B) consists of sidewalks, road shoulders, boardwalks and trails. Additional information can be found at <https://www.clearcreektrail.org>.

Located on the beautiful Kitsap Peninsula, the Clear Creek Trail follows Clear Creek as it meanders through riparian areas, wetlands, and remnant forests.

The 5k route begins and ends at the Silverdale Rotary Gateway Park located at 11601 Silverdale Way NW, Silverdale, WA 98383.

The 10k route begins and ends in front of the Harrison Medical Center Emergency Room door located at 1800 NW Myhre Rd, Silverdale, WA 98383. Please park in the lower end of the parking lot.

## **Walk Registration:**

Registration takes place online using the AVA Online Start Box, on

<http://my.ava.org>. Follow the instructions provided to create a user account and sign the AVA waiver (one time). Instructions for payment are also included. Download the directions and print as needed. The POC does not provide event directions or accept alternate payment methods.

## **Walk Completion and Walk Credit:**

Once you have physically completed the walk, please login to your Online Start Box account click on the “My Start Box” tab, then the “Finish Table” tab, then click on “Go to Finish Table” button for the event you have completed. Use the displayed entry form to submit the date and distance of your walk as well as select applicable AVA Special Programs to generate stamped “virtual” insert cards that you may choose to print out.

## **Table of Contents:**

Use the following table to guide what portion of this document you may wish to print out.

<b>Section Contents</b>	<b>Pages</b>
Introduction, Walk Registration/Completion, and Table of Contents	1
Driving and Walk Directions	2-6
Maps	7-10
AVA and ESVA Special Programs	11

**CLEAR CREEK TRAIL**

**OLYMPIC PENINSULA EXPLORERS VOLKSSPORT CLUB**

**10km Rated 2B**

**YRE 1739**

**ESVA Challenges:** 39 Counties – Kitsap

**AVA Challenges:** 50 States/51 Capitals, Walk the USA: A - Z

This walk begins in front of the Harrison Medical Center Emergency Room doors. The medical center is located at 1800 NW Myhre Rd, Silverdale, WA 98383. Please park in the lower end of the parking lot.

1. Facing the Harrison Medical Center Emergency Room entrance turn **RIGHT**. Follow through the parking area turning **LEFT** when you can't go any further and then **RIGHT** exiting Harrison Medical Center.
2. Turn **LEFT** on Ridgetop Blvd on sidewalk.
3. Turn **LEFT** at third traffic light on unmarked road which is just past "Anchor of Hope Christian Reformed Church" and continue straight ahead on road which will turn into Clear Creek Trail. Go around yellow metal gate. **(1K)**
4. Continue on main trail until you come the next yellow metal gate. Walk around the gate **(2K)** and then pass by a red building structure on your left.
5. Continue on paved path and turn **LEFT** at a "Y" and cross small bridge. Trail will exit at Silverdale Way.
6. At the light **cross** Silverdale Way (unmarked) at the crosswalk and enter paved Clear Creek Trail straight ahead passing by three yellow posts.
7. **CROSS** bridge and then turn **LEFT**. **(3K)**
8. Continue on paved path to "Bring Clear Creek Back to Life" sign located on right side of trail and Clear Creek Trail is also located there.
9. Turn **RIGHT** onto Clear Creek Trail and continue on trail over several bridges. At a "T" turn **LEFT**.
10. Follow trail as it curves **RIGHT**. After passing by the third wooden post and a small pond, located on the left side of the trail, there will be a small trail on your left, immediately before the end of the main trail due to beaver activity.
11. Turn **LEFT** and follow the trail through a meadow walking towards the highway in the distance.
12. Before you get to a paved trail, turn **RIGHT** onto dirt trail that runs parallel to the paved path. (not the trail heading to the bridge)
13. Before the red barn, veer **RIGHT** at the "Y". **(4K)**
14. Follow trail to a "T" and then turn **LEFT**.
15. Follow dirt trail and boardwalk to a "T" where several signs are on a wood post and then turn **LEFT**. **(5K)**
16. Walk to a paved road (unmarked) and then turn **RIGHT** and walk until you come to three yellow metal posts. Pass between them.

In case of emergency: Dial 9-1-1 - Event related assistance: Todd Oberlander: 360-620-0810

Sanction fee kindly paid by Ric Catron

©2020 Olympic Peninsula Explorers – All Rights Reserved

These directions and maps may only be used in conjunction with a signed American Volkssport Association athletic waiver. All other uses prohibited.

**CLEAR CREEK TRAIL**

**OLYMPIC PENINSULA EXPLORERS VOLKSSPORT CLUB**

**10km Rated 2B**

**YRE 1739**

**ESVA Challenges:** 39 Counties – Kitsap

**AVA Challenges:** 50 States/51 Capitals, Walk the USA: A - Z

***ONLY** if you need to use the restroom, turn left and pass between another three yellow metals posts on your left and then immediately turn right to the restroom.*

17. Continue on paved path to a bridge and **cross** over this bridge and exit park area to Silverdale Way **(6K)**
18. Turn **RIGHT** on sidewalk at Silverdale Way. Go under the overpass and **cross** the unmarked street at the light (entrance to Home Depot) then immediately turn **LEFT** and **cross** Silverdale Way.
19. Turn **RIGHT** on Silverdale Way and then immediately turn **LEFT** onto Clear Creek Trail.
20. At a “T” turn **RIGHT**. At a “Y” turn **LEFT** and **cross** wooden bridge staying to your left. Continue on trail to Myhre Rd.
21. Turn **LEFT** on Myhre Rd and **cross** bridge.
22. At the first traffic light turn **RIGHT** and **cross** Myhre Rd then immediately turn **RIGHT** and **cross** Mickelberry Rd and continue straight on Myhre Rd.
23. After **crossing** the same bridge that you previously crossed, turn **LEFT** onto a dirt trail, “Clear Creek Trail”. **(7K)**
24. Follow trail until you come to a bridge on your left. Turn **LEFT** and **cross** the bridge and then immediately turn **LEFT** on a trail.
25. Follow trail until it comes out on Mickelberry Rd. Turn **LEFT** and walk on the sidewalk to the first traffic light.
26. Turn **RIGHT** at light and **cross** Mickelberry Rd then immediately turn **LEFT** and **cross** Myhre Rd.
27. Turn **RIGHT** and immediately turn **LEFT** onto dirt trail, “Clear Creek Trail”.
28. At a “T” on boardwalk, turn **RIGHT**. **(8K)**
29. Continue **STRAIGHT**, staying on **main trail**. The trail will continue uphill taking you through the woods, eventually passing the Harrison Medical Center garage on your right. **(9K)**
30. Exit trail at Ridgetop Blvd. Turn **RIGHT** and walk to third driveway entrance on your right, which is Harrison Medical Center **Emergency entrance**. It is the same entrance that you exited at the beginning of the walk.
31. Turn **RIGHT** at this entrance, then turn **LEFT** and then turn **RIGHT** walking through the parking area back to Emergency Room entrance.
32. Be sure to log back into the OSB system (my.ava.org) to “finish/complete” your online registration after doing the walk. The OSB system does not deduct any walking fee from a walker’s Event Bank until they have submitted walk completion info including the date the event was walked, the distance walked, and the selection of applicable special programs that walker is participating in. (Nevertheless, a fee of \$2 for a downloaded pdf is deducted from the

In case of emergency: Dial 9-1-1 - Event related assistance: Todd Oberlander: 360-620-0810

Sanction fee kindly paid by Ric Catron

©2020 Olympic Peninsula Explorers – All Rights Reserved

These directions and maps may only be used in conjunction with a signed American Volkssport Association athletic waiver. All other uses prohibited.

WELCOME TO OUR YEAR-ROUND VOLKSSPORT EVENT

**CLEAR CREEK TRAIL**

**OLYMPIC PENINSULA EXPLORERS VOLKSSPORT CLUB**

**10km Rated 2B**

**YRE 1739**

**ESVA Challenges:** 39 Counties – Kitsap

**AVA Challenges:** 50 States/51 Capitals, Walk the USA: A - Z

user's Event Bank when the pdf is downloaded. Later, any pdf fees are credited back to a walker's Event Bank when he/she submits the walk completion info as a paying for credit walker.) Note however that the \$2 "coupon" for the downloaded PDF expires in 60 days.

In case of emergency: Dial 9-1-1 - Event related assistance: Todd Oberlander: 360-620-0810

Sanction fee kindly paid by Ric Catron

©2020 Olympic Peninsula Explorers – All Rights Reserved

These directions and maps may only be used in conjunction with a signed American Volkssport Association athletic waiver. All other uses prohibited.

Rev: 12/2019

WELCOME TO OUR YEAR-ROUND VOLKSSPORT EVENT

**CLEAR CREEK TRAIL AT GATEWAY PARK**

**OLYMPIC PENINSULA EXPLORERS VOLKSSPORT CLUB**

**5km Rated 1B**

**YRE 1739**

**ESVA Challenges:** 39 Counties – Kitsap

**AVA Challenges:** 50 States/51 Capitals, Walk the USA: A - Z

This walk begins and ends at the Silverdale Rotary Gateway Park located at 11601 Silverdale Way NW, Silverdale, WA 98383

1. Begin your walk by entering Gateway Park at the far-right side of the parking area, facing away from Silverdale Way. Pass between the three yellow metal posts and immediately turn **LEFT**.
2. Continue on paved path to a covered picnic table on your right. Immediately after you pass by this covered picnic table, turn **RIGHT**.
3. Continue on paved path to “Bring Clear Creek Back to Life” sign located on right side of trail and Clear Creek Trail sign is also located there.
4. Turn **RIGHT** and continue on trail until you see a “Clear Creek Valley Floor” sign on left side of trail **(1K)**
5. Turn **LEFT** at this sign and walk into a meadow. Walk straight through the center of the meadow. Continue straight on a small foot trail through a small section of woods to a paved path.
6. Turn **RIGHT** on paved path.
7. When you come to a wooden post located on your left with two directional signs on it “Silverdale Way” and “Trigger Ave” and a wooden bench on the right side of the paved path, turn **RIGHT** and immediately, turn **LEFT** onto dirt trail that runs parallel to paved path that you were just on.
8. Before the red barn, veer **RIGHT** at a “Y”.
9. Follow trail to a “T” and then turn **LEFT**. **(2K)**
10. Follow dirt trail and boardwalk to a “T” where several signs are on a wood post located on your right and then turn **RIGHT**.
11. Follow trail as it curves **RIGHT**. After passing by the third wooden post and a small pond, located on the left side of the trail, there will be a small trail on your left, immediately before the end of main trail, due to beaver activity.
12. Turn **LEFT** and follow trail through a meadow walking towards the highway in the distance until you see a small foot trail on your right leading to a small wooden bridge in this meadow.
13. Turn **RIGHT** on foot trail and cross this small wooden bridge in the meadow. **(3K)**
14. Continue **STRAIGHT** and follow trail through meadow towards the same red barn you passed before. At a “T”, turn **LEFT**.
15. When the dirt trail turns to rocks, veer **LEFT**.
16. Look for the next foot trail on your left. Turn **LEFT** on a very small foot trail and walk a

In case of emergency: Dial 9-1-1 - Event related assistance: Todd Oberlander: 360-620-0810

Sanction fee kindly paid by Ric Catron

©2020 Olympic Peninsula Explorers – All Rights Reserved

These directions and maps may only be used in conjunction with a signed American Volkssport Association athletic waiver. All other uses prohibited.

Rev: 12/2019

WELCOME TO OUR YEAR-ROUND VOLKSSPORT EVENT

**CLEAR CREEK TRAIL AT GATEWAY PARK**

**OLYMPIC PENINSULA EXPLORERS VOLKSSPORT CLUB**

**5km Rated 1B**

**YRE 1739**

**ESVA Challenges:** 39 Counties – Kitsap

**AVA Challenges:** 50 States/51 Capitals, Walk the USA: A - Z

short distance to the same wooden bridge that you crossed over before.

when he/she submits the walk completion info as a paying for credit walker.) Note however that the \$2 “coupon” for the downloaded PDF expires in 60 days.

17. Turn **RIGHT** and cross this bridge then veer **RIGHT**.

18. Follow trail to a paved path and then turn **LEFT**. Continue on paved path until you come to Clear Creek Trail sign on your left (same trail previously walked).

19. Turn **LEFT** on Clear Creek Trail. **(4K)**

20. Continue on trail over several bridges. At a “T” turn **RIGHT**.

21. Continue **STRAIGHT** on trail until you come to a paved road (unmarked) and then turn **RIGHT**.

22. Continue on paved road until you come to three yellow metal posts. Pass between them and then pass between three more yellow metal posts which brings you back to the parking area.

23. Be sure to log back into the OSB system (my.ava.org) to “finish/complete” your online registration after doing the walk. The OSB system does not deduct any walking fee from a walker’s Event Bank until they have submitted walk completion info including the date the event was walked, the distance walked, and the selection of applicable special programs that walker is participating in. (Nevertheless, a fee of \$2 for a downloaded pdf is deducted from the user’s Event Bank when the pdf is downloaded. Later, any pdf fees are credited back to a walker’s Event Bank

In case of emergency: Dial 9-1-1 - Event related assistance: Todd Oberlander: 360-620-0810

Sanction fee kindly paid by Ric Catron

©2020 Olympic Peninsula Explorers – All Rights Reserved

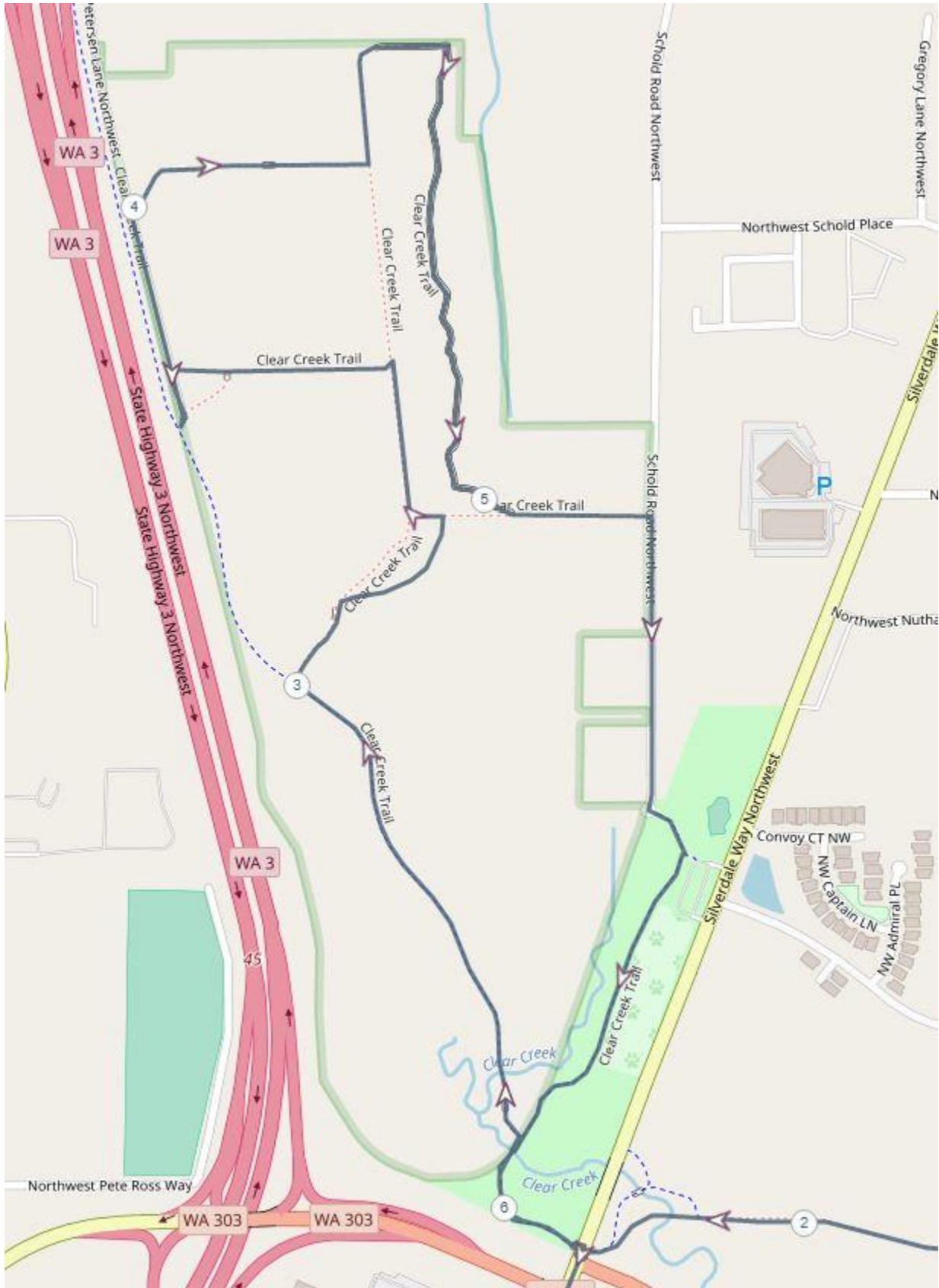
These directions and maps may only be used in conjunction with a signed American Volkssport Association athletic waiver. All other uses prohibited.

Rev: 12/2019

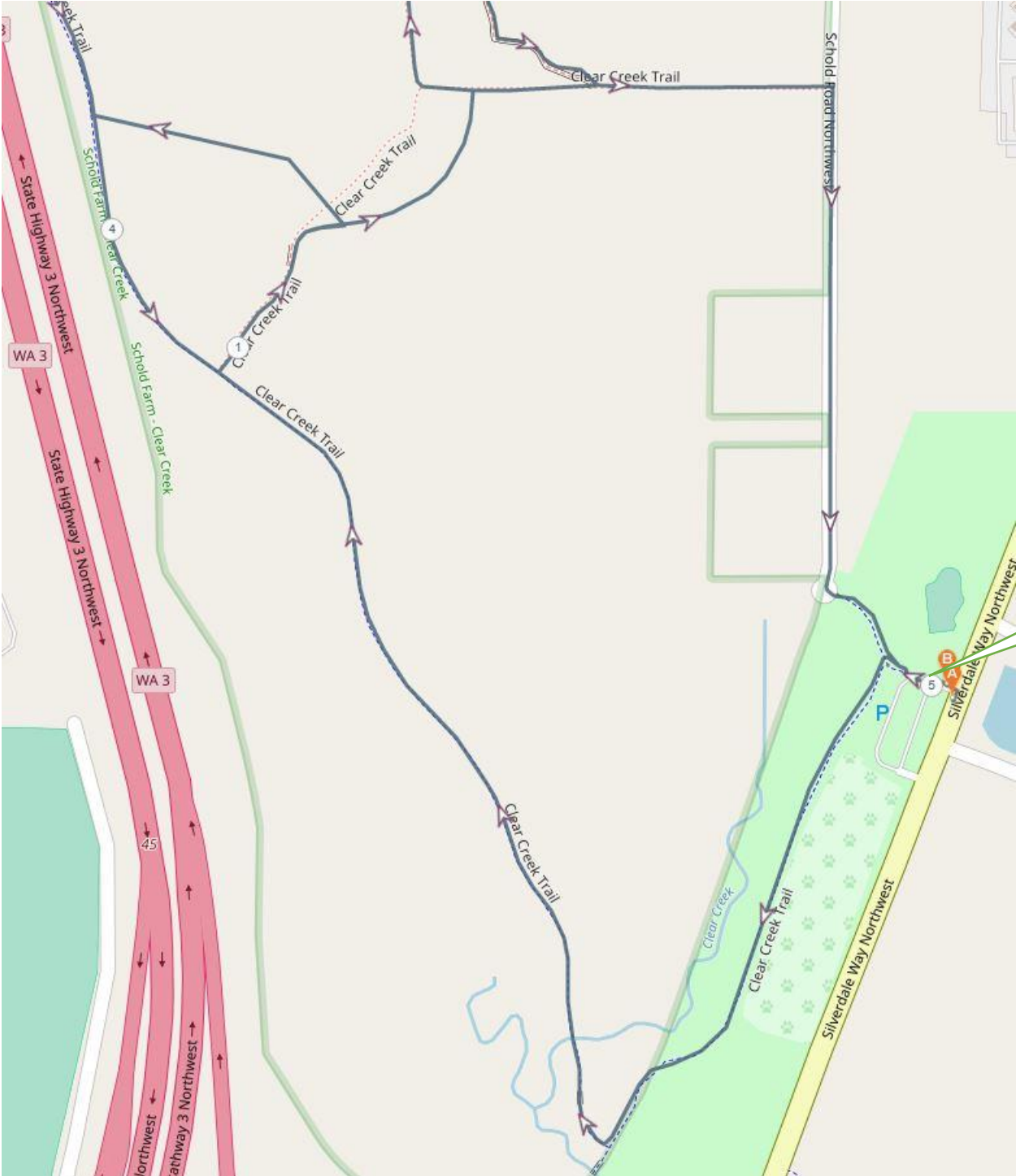
# Silverdale Clear Creek 10k Map – Part 1



# Silverdale Clear Creek 10K Map – Part 2



# Silverdale Clear Creek 5K Map – Part 1



# Silverdale Clear Creek Trail 5k Map – Part 2

