

INSTRUCTIONS Ontario, Oregon 6/10 km walks

Malheur County

6 KM and 10 KM Rated 1A – Stamp # Y1832

Walk Start Location: Union Pacific Depot, 300 Depot Lane, Ontario, OR

GPS Coords: 44.02655, -116.96294

No Restrooms available at Start

DRIVING DIRECTIONS: I-84 East to Ontario Exit 376B. RIGHT on Hwy 30/Idaho Ave. Drive approx. 6 miles. LEFT at Oregon St (first street after driving under RR tracks). LEFT on N Oregon St to LEFT on SW 3d Ave to Union Pacific Depot. Park across from the depot in the large parking lot. No restrooms at start. I-84 West to Ontario. Take Exit 376A. Then turn LEFT on Hwy 20/Idaho Ave

PARK: Across from the Depot

Walk completion and Credit: Be sure to log back into the OSB to finish/complete your online registration after doing the event. The OSB system does not deduct any event fee from a participant's Event Bank until they have submitted event completion info including the event was walked, the distance walked, and the selection of applicable special programs that person is participating in. (Nevertheless, a fee of \$2 for a download PDF is deducted from the user's Event Bank when the PDF is downloaded. Later, any PDF fees are credited back to a user's Event Bank when he/she submits the event completion info as a paying for credit participant. Note, however, the \$2 coupon for the downloaded PDF will expire in 60 days).

ONTARIO

Malheur County, 6 KM, Rated 1A

These walking instructions and maps may only be used in conjunction with a signed American Volkssport Association athletic waiver. All other uses are prohibited. For emergencies: contact 911. Walk owner is Martha Korff and she can be reached at 503-369-9906.

<ol style="list-style-type: none">1. From the parking lot as you face the Union Pacific Depot (no restrooms)2. RIGHT on Depot Lane to SW 4th Ave3. RIGHT on SW 4th Ave to Oregon St4. RIGHT on S Oregon St to Idaho Ave5. RIGHT on E Idaho Ave/Hwy 30 (1 km at 2d Ave) (2 km at Goodfellow St/Kendall Rd)	<ol style="list-style-type: none">6. After standing under the Welcome to Idaho Sign for a Photo (3 km), return back across the Snake River (4 km at I-84. 5 km at 2d St)7. LEFT on Oregon St to SW 1st Street8. LEFT on SW 1st St to Depot Lane9. RIGHT on Depot Lane to Union Pacific Station and Finish
---	--

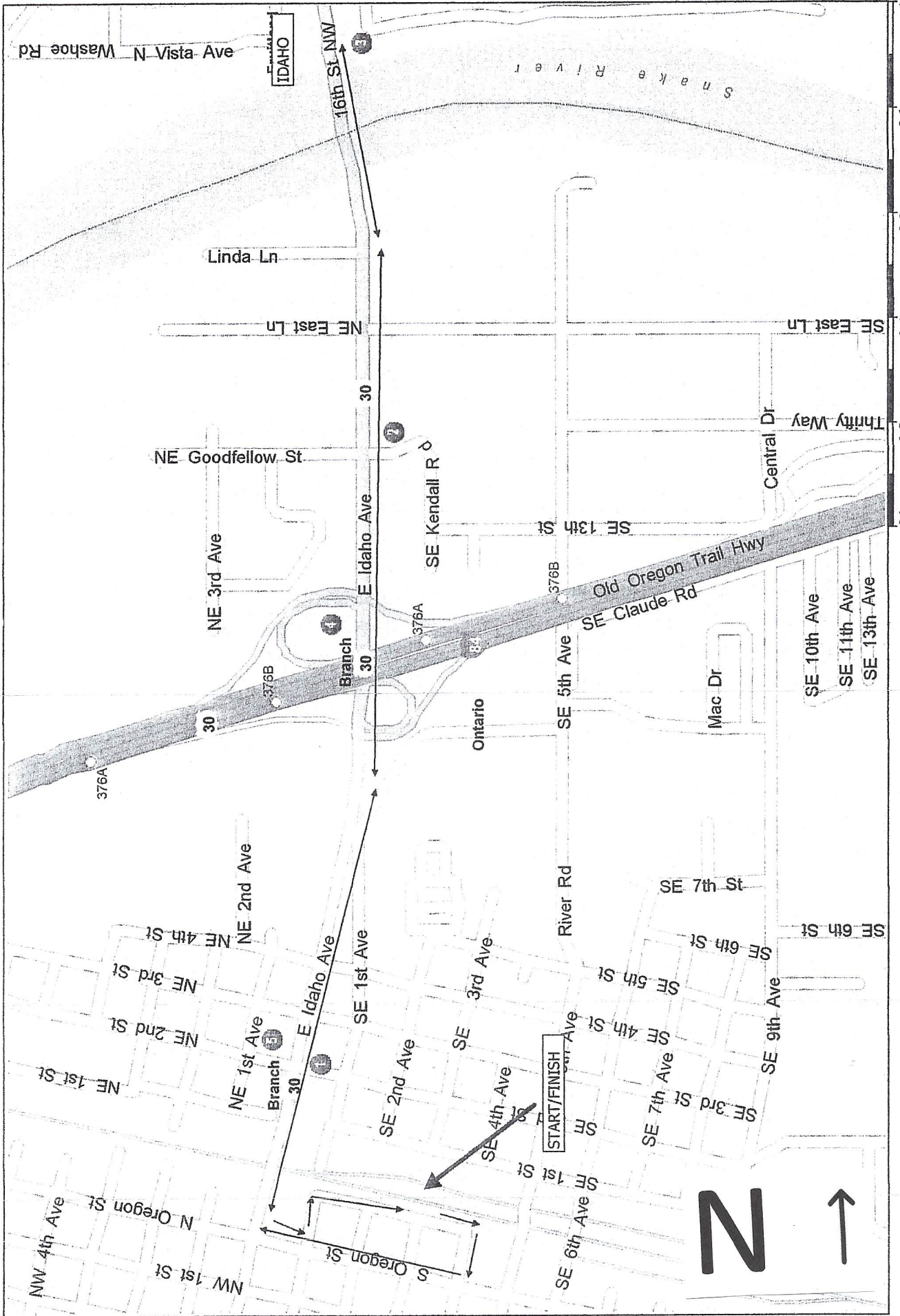
ONTARIO

Malheur County, 10 KM, Rated 1A

These walking instructions and maps may only be used in conjunction with a signed American Volkssport Association athletic waiver. All other uses are prohibited. For emergencies: contact 911. Walk owner is Martha Korff and she can be reached at 503-369-9906.

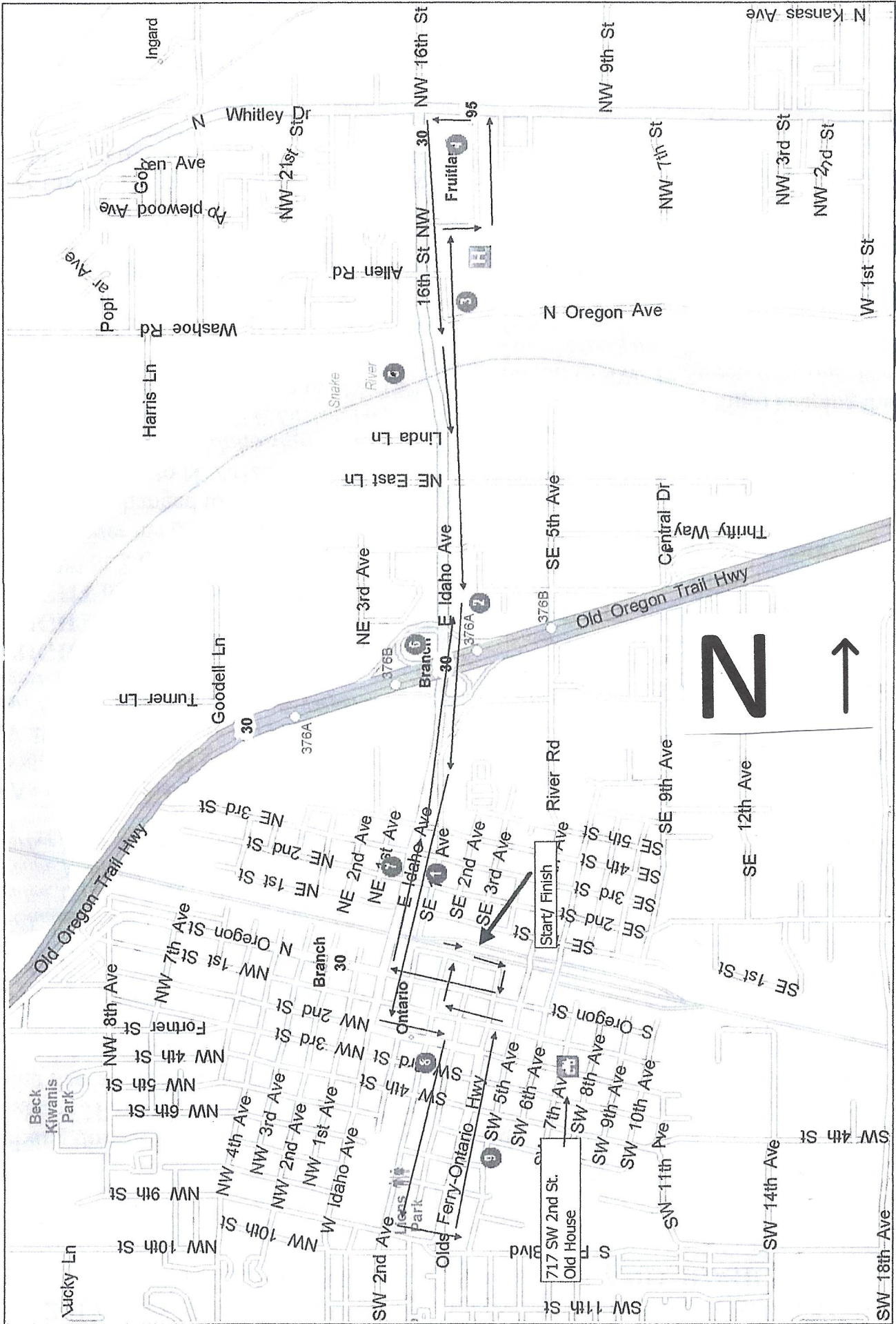
<ol style="list-style-type: none">1. From the parking lot as you face the Union Pacific Depot (no restrooms)2. RIGHT on Depot Lane to SW 4th Ave3. RIGHT on SW 4th Ave to Oregon St4. RIGHT on S Oregon St to Idaho Ave5. RIGHT on E Idaho Ave/Hwy 30 (1 km at 2d Ave) (2 km at Goodfellow St/Kendall Rd)6. CROSSING over the Snake River Bridge, street named changed to 16th St, NW Fruitland, ID to N Arizona Ave (3 km) (photo Welcome to Idaho sign)7. RIGHT on N Arizona Ave to NW 13th8. LEFT on NW 13th St to NW 13th St to Hwy 95/N Whitley Dr9. LEFT on Hwy 95/Whitley Dr to 16th St NW (4 km)10. LEFT on 16th St NW cross over Snake River (5 km). Street name changes to E Idaho Ave/Hwy 30 to SW 2d St (6 km at I-84)	<ol style="list-style-type: none">11. After walking through the tunnel (7 km) count 3 streets then CROSS SW 2d St (no sign) then LEFT on SW 2d St (watch your numbered Sts and Aves to SW 3d Ave)12. RIGHT on SW 3d Ave to continue through the Lions Park (restroom on the right at entrance of the park) to SW 9th St (8 km)13. LEFT on sidewalk at end of Lions Park to SW 9th St (no sign) to SW 4th Ave14. KEEP LEFT as sidewalk curves left to SW 4th Ave (no sign) keeping the park on left to SW 1st St. (9 km at 6th St)15. LEFT on SW 1st St to SE 2d Ave16. RIGHT on SE 2d Ave to Depot Lane17. RIGHT at Depot Lane (no sign) walking toward the Union Pacific Depot to Finish
---	--

Ontario_6K



Copyright © and (P) 1988-2012 Microsoft Corporation and/or its suppliers. All rights reserved. <http://www.microsoft.com/streets/>
Certain mapping and direction data © 2012 NAVTEQ. All rights reserved. The Data for areas of Canada includes information taken with permission from Canadian authorities, including: © Her Majesty the Queen in Right of Canada, © Queen's Printer for Ontario, NAVTEQ, and NAVTEQ ON BOARD are trademarks of NAVTEQ. © 2012 Tele Atlas North America, Inc. All rights reserved. Tele Atlas and Tele Atlas North America are trademarks of Tele Atlas, Inc. © 2012 by Applied Geographic Solutions, Inc.
© Copyright 2012 by Woodall Publications Corp. All rights reserved.

Ontario_10K Border Crossing



Copyright © and (P) 1988-2012 Microsoft Corporation and/or its suppliers. All rights reserved. <http://www.microsoft.com/streets/>
 Certain mapping and direction data © 2012 NAVTEQ. All rights reserved. The Data for areas of Canada includes information taken with permission from Canadian authorities, including: © Her Majesty the Queen in Right of Canada, © Queen's Printer for Ontario, NAVTEQ and NAVTEQ ON BOARD are trademarks of NAVTEQ. © 2012 Tele Atlas North America, Inc. All rights reserved. Tele Atlas and Tele Atlas North America are trademarks of Tele Atlas, Inc. © 2012 by Applied Geographic Solutions. All rights reserved. Portions © Copyright 2012 by Woodall Publications Corp. All rights reserved.