



UPSTATE PATHFINDERS

A VOLKSMARCH CLUB

EST. 2011



Historic Greer 6/10K Walk Y2530©2020

The UpState PathFinders Volksmarch Club of Greenville, SC., and only South Carolina member of AVA: America's Walking Club. We welcome you to our Historic Greer 6/10k Year-Round Event (YRE) and we thank you for taking interest in one of our walks. This event is rated 1A and the starting/finishing is at the far end of the parking lot facing the Greer City Hall building. Quintessential sleepy, southern town established in 1873 with refurbished mill housing and older stately homes. A beautiful city park with musical interactive fountains is along the route as well a Veterans Park with an old tank and helicopter on display. Plenty of places to eat and many places listed on the National Registry of Historical places.

Walk Registration:

Registration takes place online using that AVA Online Start Box, on my.ava.org. Follow the instructions provided to create a user account and sign the AVA waiver (one time). Instructions for payment are also included. Download the directions and print as needed. The POC does not provide event directions or accept alternate payment methods.

Walk Completion and Walk Credit

Once you have physically completed the walk, please login to your Online Start Box account click on the "My Start Box" tab, then the "Finish Table" tab, then click on "Go to Finish Table" button for the event you have completed. Use the displayed entry form to submit the date and distance of your walk as well as select applicable AVA Special Programs to generate stamped "virtual" insert cards that you may choose to print out.

Table of Contents

Use the following table to guide what portion of this document you may wish to print out

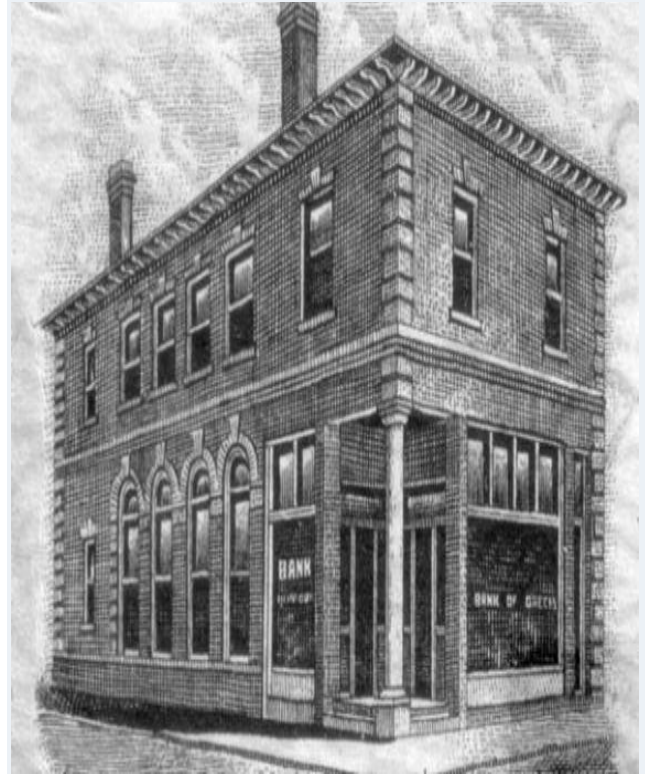
CONTENTS	PAGE
Introduction, Walk Registration, Walk Completion and Walk Credit, Table of Contents	1
Geer History, Driving Directions, Restrooms	2
Emergency numbers, Walk instructions	3, 4
Historic Geer written directions full 10k route	5
Special Programs for Historic Geer, Listing of UpState PathFinders' YRE's (Year-Round Events) & TE's (Traditional Events)	6

History of Greer

Greer is full of history. Long before there was a Greer, South Carolina, the Cherokee Indians hunted, and early settlers began to farm along the abundant rivers and creeks of the area. When the Indian Boundary Line was drawn in 1761 from the blockhouse in Tryon, North Carolina, south toward Greer, the Spartanburg County side of the line was deeded to the South Carolina Province. The closest blockhouse to Greer was Thompson's Fort, which offered safety and trading. In 1777 the Cherokees made treaties to cede the rest of the land to South Carolina. Today, Line Street commemorates this early history and serves as a county line.

The site of Greer was called the old Blakely Place, a 200-acre farm owned by James Manning Greer. The Blakely farmhouse was the first known house in the history of Greer and sat behind the Greer Drug Company in the vicinity of Victoria Street.

According to tradition, Greer traded a few acres to the railroad in exchange for a wagon and a team of mules. He then sold the rest of his land to W.T. Shumate, who began selling lots when he realized the potential for a town around the train station. A lot in the planned business district sold for anywhere between \$25 and \$75 per acre.



Since the first post office was in the station, the postmark read "Greer's Depot." On March 25, 1876, with 15 votes the town was incorporated as "Greers." William C. Bailey was elected mayor, and the first councilmen were Dr. H.V. Westmoreland, W.A. Hill, David Cannon, and A.J. Morgan. The "s" disappeared sometime in the early part of the century. Thus, Greer owed its creation to the Southern Railroad, which was finished in 1873. The first shipment was fertilizer from Greenville.

Historic Greer Walking Directions

Start Point

Greer City Hall, 301 E Poinsett St, Greer, SC 29651, parking lot facing two entrance doors.

Driving Directions

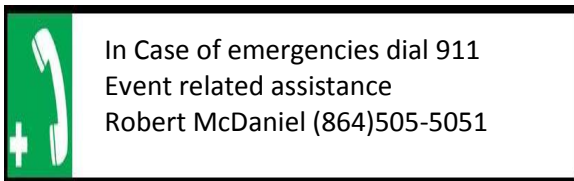
From Charlotte, NC:

1. Take the I-85 Bus Loop exit, EXIT 77, toward Spartanburg.
2. Merge onto I-85 Bus S. Merge onto Fort Prince Blvd/SC-129 via EXIT 68 toward Greer.
3. Right onto Greenville Hwy/US-29 S.
4. Continue to follow US-29 S. US-29 S is just past Holly Springs Rd. (6.5 Miles).
5. Destination on the left. Make a U-turn onto W Wade Hampton Blvd/US-29 N.

Restrooms

Public Restrooms available at Geer City Hall when open, City Park's playground near picnic pavilion near center of amphitheater and various businesses along the downtown along the walk.

Emergency Numbers



These walk directions and maps may only be used in conjunction with a signed American Volkssport Association athletic waiver. All other uses are prohibited.

Walking Instructions

Note: Facing the two doors of City Hall's building from the parking lot.

1. **Right** at sidewalk, continue towards playground.
2. **Left** at split uphill
3. **Left** at split towards/through arbors of city hall building
4. **Right** at traffic circle towards the water feature in center of amphitheater
5. **Left** at center water feature.
6. Exit park
7. **Left** at E. Poinsett St.
8. **Right** at traffic light/S. Line St.
9. **Left** at 12th St.
10. **Right** after crossing S. Line St.
11. **Left** at 16th St.
12. **Right** at entrance to Veteran's Park.
13. **Right** at split towards helicopter.
14. Follow path pass the Mortar Carrier.
15. **Left** at 2nd sidewalk to monument.
16. Continue to monument then exit park where you entered.
17. **Left** at street/16th St.
18. **Right at S. Line St.**
19. **Left** at 14th St.
20. Cross S. Line St., continue along Marchant St.
21. **Right** at Trade St.
22. **Right** at Randall St.
23. **Left** at Depot St.
24. **Left** at Poinsett St.
25. **Left** at Victoria St.
26. **Left** at Trade St.
27. **Right** at Randall St.
28. **Left** at S. Main St.
29. **Left** at Cannon Ave.
30. **Left** at Lindall St.
31. **Left** at Moore St.
32. **Right** at Able St.
33. **Left** at Anderson St.

6K Split

6K Walkers continue step# 34

10K Walkers skip to step# 44

6K Walkers

34. **Right** at Stewart St.
35. **Right** at Duke St.
36. **Right** at Pennsylvania Ave.
37. **Left** at S. Main St.
38. **Right** after crossing Poinsett St.
39. **Left** at City Park entrance.
40. **Right** at split.
41. **Right** at split/restrooms.
42. **Right** at next split.
43. **Right** down steps continue to the front of City Hall building – **Start/Finish.**

End of Walk

Be sure to log back into the OSB system (my.ava.org) to “finish/complete” your online registration after doing the walk. The OSB system does not deduct any walking fee from a walker’s Event Bank until they have submitted walk completion info including the date the event was walked, the distance walked, and the selection of applicable special programs that walker is participating in. (Nevertheless, a fee of \$2 for a downloaded pdf is deducted from the user’s Event Bank when the pdf is downloaded. Later, any pdf fees are credited back to a walker’s Event Bank when he/she submits the walk completion info as a paying for credit walker.) Note however that the \$2 “coupon” for the downloaded PDF expires in 60 days.”

10K Walkers

44. Continue along Anderson St., which changes to Gallivan St.
45. **Right** at Thompson St.
46. **Right** at Haynes St.
47. **Left** at Parker St.
48. **Right** at Stewart Ave.
49. **Left** at Duke St.
50. **Right** at Pennsylvania Ave.
51. **Left** at S. Main St.
52. **Left** after crossing McCall St.
53. **Right** at S. Miller St.
54. **Right** at E. Poinsett St.
55. **Right** at Trade St.
56. **Left** at Victoria St.
57. **Left** at Poinsett St.
58. **Right** after crossing Main St.
59. **Left** after crossing Poinsett St.

60. **Right** at Davenport Ave.
61. **Right** at W. Church St.
62. **Left** at Miller St.
63. **Left** at W. Arlington St.
64. **Right** at North Ave.
65. **Right** at Drace Ave.
66. **Right** at Miller St.
67. **Left** at W. Arlington ST.
68. **Left** at Hilton St.
69. **Right** at W. Bearden St.
70. **Right** at N. Main St.
71. **Left** at E. Arlington St.
72. **Right** at Cannon St.
73. **Left** down steps towards pond.
74. **Left** at bottom of steps.
75. **Right** at 1st split.
76. **Left** at pond.
77. Continue $\frac{3}{4}$ clockwise around pond.
78. **Left** up steps.
79. **Left** at top of steps.
80. **Right** at split/picnic pavilion.
81. **Left** at circle, exit opposite side.
82. Continue to the parking lot, city hall building – **Start/Finish.**

End of Walk

Thank you for your interest in our walk. Please contact us at www.upstatepathfinders.com and tell us about our walk or to find out information on any of our other walks

Be sure to log back into the OSB system (my.ava.org) to “finish/complete” your online registration after doing the walk. The OSB system does not deduct any walking fee from a walker’s Event Bank until they have submitted walk completion info including the date the event was walked, the distance walked, and the selection of applicable special programs that walker is participating in. (Nevertheless, a fee of \$2 for a downloaded pdf is deducted from the user’s Event Bank when the pdf is downloaded. Later, any pdf fees are credited back to a walker’s Event Bank when he/she submits the walk completion info as a paying for credit walker.) Note however that the \$2 “coupon” for the downloaded PDF expires in 60 days.”

HISTORIC GREER 6K

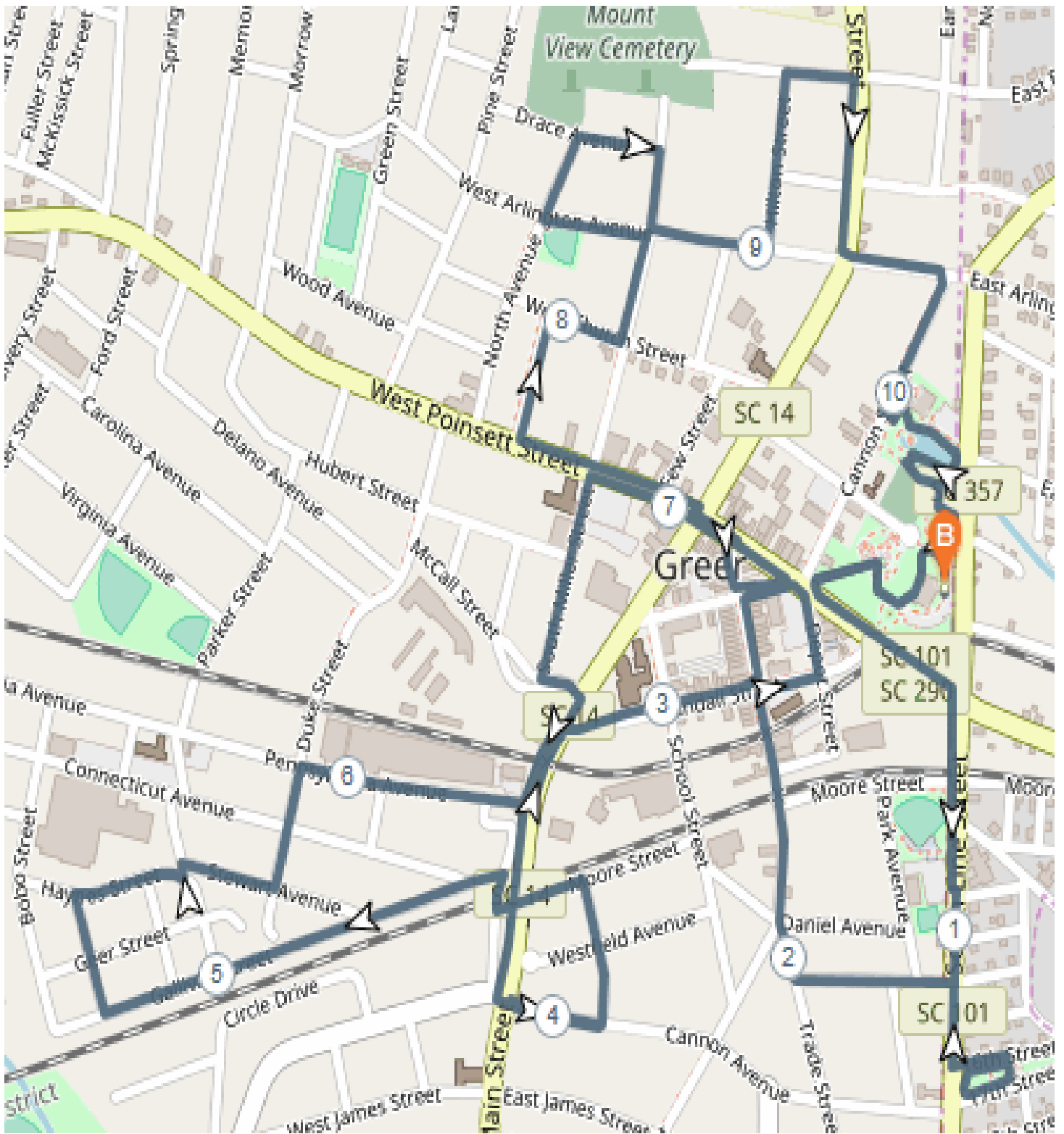


[Type here]

[Type here]

Copyright©2020 UpState PathFinders

HISTORIC GREER 10K



[Type here]

[Type here]

Copyright©2020 UpState PathFinders

**The UpState PathFinders
Historic Greer
2020 Special Programs
(12-21-2019)**

<u>Special Program</u>	<u>Locations</u>
Little Free Libraries	108 S. Line St.
Ice Cream Parlors	102 E. Poinsett St. - TCBY
Rockin' Around the Clock	Greer Station, City Hall Building
Take a Walk In a City Park	Veterans Park,
Walking the USA A - Z	G – Greer

**UpState PathFinders
Listing of YRE's**

Historic Greenville 5/10k YRE	Historic Greer 5/10K YRE (OSB)
Alta Vist 5/10K YRE	Lake Conestee Nature Park 5/10K YRE
Greenville City Parks 5/10k YRE	Historic Georgetown 5/10K YRE (OSB)
Paris Mountain State Park 5/10k YRE	Swamp Rabbit Trail 10-50K YRE
Furman University 5/10k YRE	
Travelers Rest 5/10K YRE	Please see website www.upstatepathfinders.com for more details on our walks or find us on Meetup.com to join us on one of our upcoming walks.
Clemson Botanical Gardens 5/10k YRE	