

# ARLINGTON – ON THE COLUMBIA – YRE 2820

This is the cover page for the Online Start Box for this Cedar Miler Event

These walking directions and maps may only be used in conjunction with a signed American Volkssport Association athletic waiver. All other uses are prohibited. For emergencies contact 911. Walk owner is Dan Webster and he can be reached at 971-221-4994.

## INTRODUCTION

Thank you for participating in this Cedar Miler event. Our goal is to make this a memorable walk for you. If there are any improvements or suggestions you have, please send them to the POC email. We do ask that if any unforeseen construction or obstacles are encountered during the walk that you also contact us so we can update the materials. If there are any new challenge sightings or if a listed challenge is no longer present, please contact us so we can update the listing information for all future walkers.

## DRIVING DIRECTIONS

**Address** Earl Snell Memorial Park Arlington, OR 97812

Across from Rodeway Inn 410 Beech St, Arlington, OR 97812

**GPS** 45.719157, -120.2036877 **PLUS CODE:** PQCW+4Q Arlington, Oregon

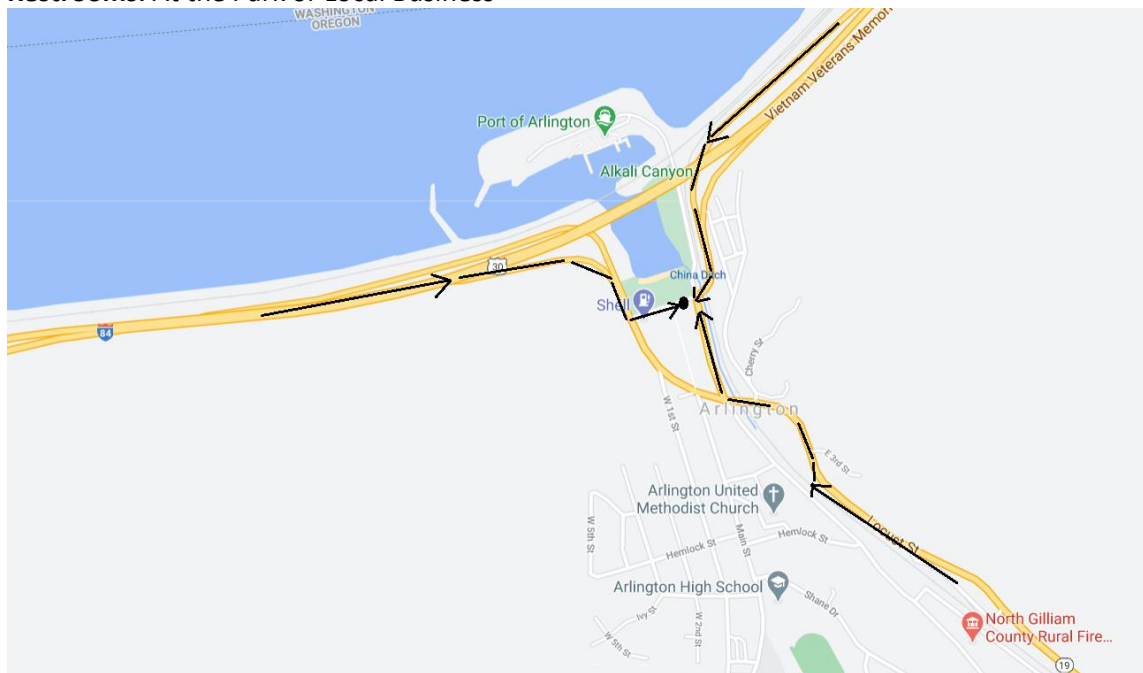
## DESCRIPTION

Arrive from the West or East on I-84. Turn on Beech St.

Arrive from the South on Hwy 19 which is Locust St. Right on Cottonwood St. Left on Beech St.

**Park** in the Earl Snell Memorial Park parking lot near Restrooms. **Little Shade so prepare accordingly.**

**Restrooms:** At the Park or Local Business



**Walk Completion and Credit:** Be sure to log back into the OSB system to finish/complete your online registration after doing the event. The OSB system does not deduct any event fee from a participant's Event Bank until they have submitted event completion info including the event was walked, the distance walked, and the selection of applicable special programs that person is participating in. (Nevertheless, a fee of \$2 for a downloaded PDF is deducted from the user's Event Bank when the PDF is downloaded. Later, any PDF fees are credited back to a user's Event Bank when he/she submits the event completion info as a paying for credit participant. Note, however, the \$2 coupon for the downloaded PDF will expire in 60 days.)

# ARLINGTON – ON THE COLUMBIA – 2820YR – 10/5k 2A

These instructions may be used only upon registration at a currently sanctioned IVV/AVA Event

Earl Snell Memorial Park Across from 410  
Beech St, Arlington, OR 97812

1. **FACING THE PARK and COVE, LEFT** on Parking Lot Sidewalk / Beech St.
2. **RIGHT** at end of sidewalk to the Caboose.
3. **RIGHT** down the steps to the Veterans Memorial
4. **CROSS** the lawn (slightly Left) and go through the covered bridge to the stairs leading up to the sidewalk on the Right.
5. **LEFT** on the sidewalk of Port of Arlington Rd.
6. **CONTINUE** towards the grain elevators
7. **CROSS** the RR Tracks, then **LEFT** down the stairs and follow path past the boat ramp to a set of stairs.
8. **RIGHT** up the stairs and **LEFT** through parking lot to the end. If weather permits, take the dirt path that leads out to the Jetty and a white sign.
9. **TURN AROUND** and retrace your path back to Port of Arlington Rd. and back to Beech St.
10. **CONTINUE STRAIGHT** as street changes to Cottonwood St. Pass Post Office on your Right.
11. **LEFT** on Hwy 19 (Locust St.) to cross over RR Track.
12. **LEFT** on Columbia St, up the hill.
13. **LEFT** on E 2<sup>nd</sup> St to the end
14. **RIGHT** on Ash Ct.
15. **LEFT** on Birch St. (no sign, looks like an alley with cement retaining wall on the right after the turn)
16. At the end of the street, turn **Right** to the yellow fire hydrant for view of Hillside Letter "A".
17. **RETRACE** steps on Birch St., crossing Ash Ct. and walk straight ahead between the white picket fences slightly uphill to Columbia St. Stop Sign.
18. **RIGHT** on Columbia St. down to Hwy 19 (Locust St.) passing the Gilliam County Sheriff Office on the Right.
19. **CROSS** the RR Tracks and Cottonwood St. to the crosswalk.
20. **LEFT** at the crosswalk, crossing Hwy 19 at Main St.
21. **LEFT**, staying on Hwy 19 to Cottonwood St.
22. **RIGHT** on Cottonwood St.
23. **5k walkers: RIGHT** on Fir St. then **RIGHT** on Main St. back to Locust St./Hwy 10. Skip to #47, using the Crosswalk
24. **10k walkers: CONTINUE** on Cottonwood St., passing the County Fire Station
25. **LEFT** on Railroad Ave. (no sign) Power Pole #285402
26. **QUICK RIGHT** on Railroad Ave. passing the N. Gilliam Co. RFPD.
27. **CROSS** Shane St. (no sign) through the chain-link fence to China Creek Golf Course Clubhouse.
28. **TURN AROUND** to head back.
29. **LEFT** at Shane Dr. (Stop Sign, no street sign) uphill to Krameria St.
30. **LEFT** on Krameria St. which turns **RIGHT** and becomes E 2<sup>nd</sup> St. This returns you to Shane Dr.
31. **LEFT** on Shane Dr. to Main St.
32. **LEFT** on Main St., passing schools on the Left.
33. **UPHILL** past the cemetery on the Right, to the Reservoir/Water Tank at the end of Main St.
34. **TURN AROUND** and proceed back to W 1<sup>st</sup> St.
35. **LEFT** on W 1<sup>st</sup> St to Ivy St.
36. **LEFT** on Ivy St. to W 3<sup>rd</sup> St.
37. **RIGHT** on W 3<sup>rd</sup> St. to Hemlock St.
38. **LEFT** on Hemlock St. to W 5<sup>th</sup> St.
39. **RIGHT** on W 5<sup>th</sup> St. to W 4<sup>th</sup> St.
40. **RIGHT** on W 4<sup>th</sup> St. to W 3<sup>rd</sup> St.
41. **RIGHT** on W 3<sup>rd</sup> St. to Hemlock St.
42. **LEFT** on Hemlock St. to W. 1<sup>st</sup> St.
43. **LEFT** on W 1<sup>st</sup> St. down to Locust St.
44. **RIGHT** on Locust St., passing City Hall on the Right.
45. **CROSS** Cedar St. and Main St.
46. **LEFT** at Crosswalk, carefully Crossing Locust St.
47. **CONTINUE** on wide sidewalk to Alkali Park.
48. **LEFT** on sidewalk at Alkali Park to Locust St.
49. **RIGHT** on Locust St. passing the Pheasant Drive-In.
50. **RIGHT** on Beech St. to Crosswalk
51. **LEFT** at/in Crosswalk.
52. **RIGHT** on Beech St./Parking Lot to FINISH at the Doc Severinsen Monument.

Thank you for walking this Year-Round. We also provide walks in Condon, Vale, John Day, Umatilla, and Irrigon. We have local YREs in Beaverton, W. Portland, Hillsboro, Forest Grove, Tigard, and Sherwood.

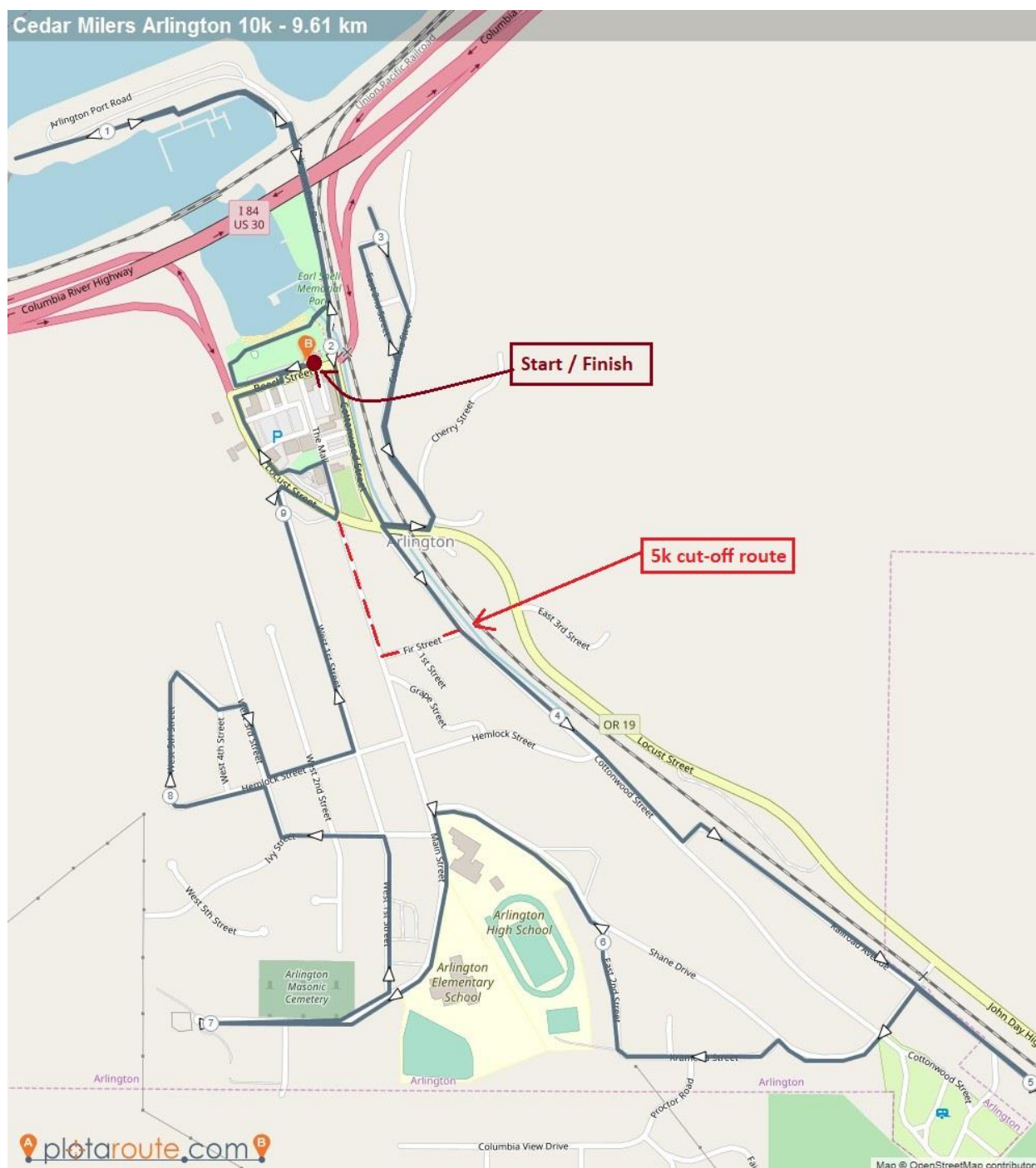
Text © 2020 Cedar Milers Volkssport Club



EMERGENCY: 911  
NON-EMERGENCY:  
POINT OF CONTACT: Dan Webster 971-221-4994

# ARLINGTON – ON THE COLUMBIA – 2820YR – 10/5k 2A

These instructions may be used only upon registration at a currently sanctioned IVV/AVA Event



Text © 2020 Cedar Milers Volkssport Club



EMERGENCY: 911  
NON-EMERGENCY:  
POINT OF CONTACT: Dan Webster 971-221-4994

[www.cedarmilerswalking.club](http://www.cedarmilerswalking.club)

[cedarmilerswalkingclub@gmail.com](mailto:cedarmilerswalkingclub@gmail.com)